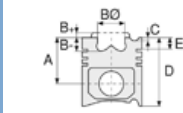




**Motor Özellikleri**  
(Engine Specifications)

İmalatçı (Manufacturer):  
IVECO LKW  
Çap (Diameter): Ø 104  
FM Grup No: 4012

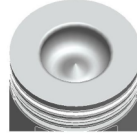
**8040.25**  
4 Sil. Dizel 3908cc  
86 Kw (115 PS) 17:1  
Turbocharge /  
Khd ile ortak motor  
(Common Engine With  
Turbocharge / Khd)  
23.12, 24.12, 85.12  
KAMYON, M29 MIDIBUS  
1987 - 1992



**Piston Ölçüleri**  
(Piston Dimensions)

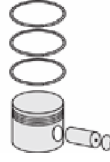
A : 65.150  
B- : 22.500  
BØ : 54.450  
D : 104.150  
E : 21.550

Pim: 38 x 85



**Piston Özellikleri**  
(Piston Features)

Segman Taşıyıcı  
(Ring Carrier)  
Yağ Püskürtme Oyuğu  
(Oil Spray Groove)  
Gözarası Konik  
(Conical Eye Gap)



**Piston Parça No**  
(Piston Part No)

87-837600-13  
87-70777-STD1C  
- 0,20 mm Kısa (Short)  
87-837600-12  
87-70777-STD C  
87-837608-12  
87-70777-060C



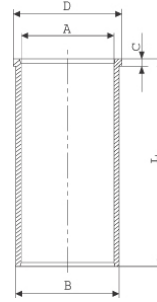
**Segman Seti**  
(Ring Set)

06-837600-90-STD  
3.000 CKP KV1  
3.000 P IKA  
4.000 CRP STD  
Goetze® LKZ-Ring®



**Silindir Gömleği**  
(Liner)

14-020440-00-D  
B : 107.000  
L : 198.000  
D : 110.500  
C : 6.500



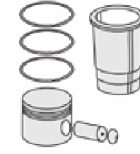
14-020441-00-D  
B : 107.200  
L : 198.000  
D : 110.500  
C : 6.500

Dış Çap 0,20 mm Farklı  
(Outside Diameter  
0,20 mm Different)

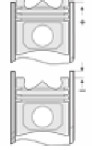
14-020442-00-D  
B : 107.500  
L : 198.000  
D : 111.000  
C : 6.500

Dış Çap 0,50 mm Farklı  
(Outside Diameter  
0,50 mm Different)

14-028640-00-D  
B : 106.970  
L : 198.000  
D : 109.900  
C : 5.000



**Silindir Kit**  
(Assembly Set)



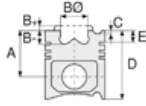
**Piston - Blok Montaj**  
Yüksekliği  
(Piston - Block  
Assembly Height)

+ 0,460 / + 0,790

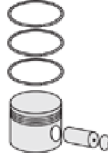




**Motor Özellikleri**  
(Engine Specifications)



**Piston Ölçüleri**  
(Piston Dimensions)



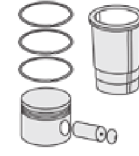
**Piston Parça No**  
(Piston Part No)



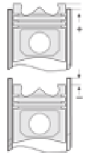
**Segman Seti**  
(Ring Set)



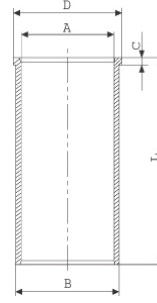
**Silindir Gömleği**  
(Liner)



**Silindir Kit**  
(Assembly Set)



**Piston - Blok Montaj**  
Yüksekliği  
(Piston - Block  
Assembly Height)



14-028641-00-D  
B : 107.170  
L : 198.000  
D : 109.900  
C : 5.000

Dış Çap 0,20mm Farklı,  
(Outside Diameter  
0,20 mm Different)

14-028642-00-D  
B : 107.470  
L : 198.000  
D : 109.900  
C : 5.000

Dış Çap 0,50mm Farklı  
(Outside Diameter  
0,50 mm Different)

14-028643-00-D  
B : 108.000  
L : 198.000  
D : 110.500  
C : 5.500

Dış Çap 1,00 mm farklı  
(Outside Diameter  
1,00 mm Different)

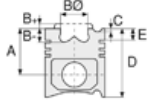
14-028644-00-D  
B : 108.500  
L : 198.000  
D : 111.000  
C : 6.000

Dış Çap 1,50 mm farklı  
(Outside Diameter  
1,50 mm Different)

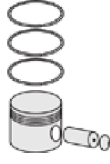




Motor Özellikleri  
(Engine Specifications)



Piston Ölçüleri  
(Piston Dimensions)



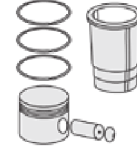
Piston Parça No  
(Piston Part No)



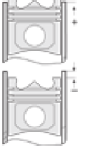
Segman Seti  
(Ring Set)



Silindir Gömleği  
(Liner)



Silindir Kit  
(Assembly Set)



Piston - Blok Montaj  
Yüksekliği  
(Piston - Block  
Assembly Height)

Ana Yatak  
(Main Bearing)



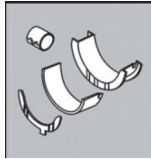
72-4546 STD

Kol Yatak  
(Connecting Rod Bearing)



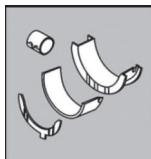
71-4389 STD

Kol Burcu  
(Small End Bushing)



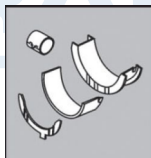
55-4105 SEMI

Eksantrik Yatak  
(Camshaft Bearing)



N153/3 STD

Ay Yatak  
(Thrust Washer)

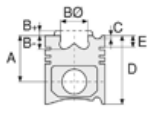


A169/4.005

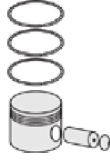




**Motor Özellikleri**  
(Engine Specifications)



**Piston Ölçüleri**  
(Piston Dimensions)



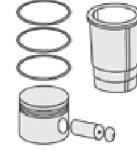
**Piston Parça No**  
(Piston Part No)



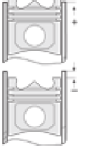
**Segman Seti**  
(Ring Set)



**Silindir Gömleği**  
(Liner)



**Silindir Kit**  
(Assembly Set)



**Piston - Blok Montaj**  
**Yüksekliği**  
(Piston - Block  
Assembly Height)

**Sil. Kapak. Conta**  
(Cylinder Head Gasket)



BV520

**Üst Takım Conta**  
(Cylinder Head Full Gasket)



DH145

**Full Takım Conta**  
(Full Set Gasket)



GH145

