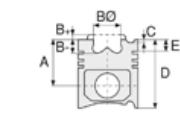




Motor Özellikleri
(Engine Specifications)

İmalatçı (Manufacturer):
FORD PKW
Çap (Diameter): 89,91
FM Grup No: 2967

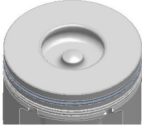
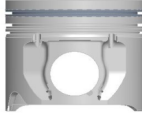
RFCA V184 TDCI
4 Sil. Dizel 2400cc 130 Ps
Common Rail, RCFA
TRANSIT 350E, TRANSIT
350ED, TRANSIT 430ED,
TRANSIT TRAVELLER
2003 - 2006



Piston Ölçüleri
(Piston Dimensions)

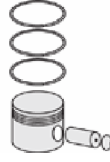
A : 53.500
B- : 15.620
BØ : 47.100
D : 80.500
E : 9.000

Pim: 32 x 71,1



Piston Özellikleri
(Piston Features)

Segman Taşıyıcı
(Ring Carrier)
Soğutma Kanallı
(Coolin Gallery)
Yağ Püskürtme Oyuğu
(Oil Jet Cut-out)
Gözarası Konik
(Conical Eye Gap)



Piston Parça No
(Piston Part No)

87-839307-43
87-70904-0501
0,20 mm Kısa (Short)

87-839300-42
87-70904-STD

87-839305-42
87-70904-025

87-839307-42
87-70904-050

87-839300-43
87-70904-STD1
0,20 mm Kısa (Short)

87-7094-0,502
87-70904-STD2



Segman Seti
(Ring Set)

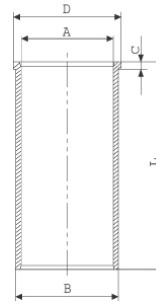
06-839300-00-STD
06-839305-00 0,25 mm
06-839307-00 0,50 mm

2.000 CK KV1
2.000 P AE222
2.000 NT ST



Silindir Gömleği
(Liner)

14-020540-00-D
B : 92.500
L : 165.000
D : 95.500
C : 3.000



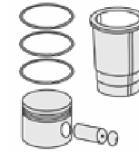
14-020541-00-D
B : 93.000
L : 165.000
D : 95.500
C : 3.300

Dış Çap 0,50mm Farklı
(Outer Diameter
0,50mm Different)

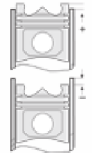
14-020542-00-D
B : 93.500
L : 165.000
D : 96.000
C : 4.000

Dış Çap 1,00mm Farklı
(Outer Diameter
1,00mm Different)

14-020910-00-D
B : 92.500
L : 165.000
D : 94.000
C : 5.000



Silindir Kit
(Assembly Set)



Piston - Blok Montaj
Yüksekliği
(Piston - Block
Assembly Height)

1,10 mm conta ile (With
Notch)

+0,30 /+0,40

1,15 mm conta ile (With
Notch)

+0,40/+0,45

1,20 mm conta ile (With
Notch)

+0,45 /+0,50

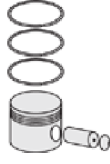




Motor Özellikleri
(Engine Specifications)



Piston Ölçüleri
(Piston Dimensions)



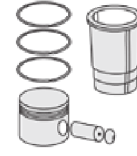
Piston Parça No
(Piston Part No)



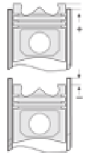
Segman Seti
(Ring Set)



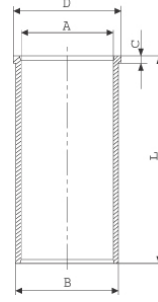
Silindir Gömleği
(Liner)



Silindir Kit
(Assembly Set)



Piston - Blok Montaj
Yüksekliği
(Piston - Block
Assembly Height)



Flanş Çapı Küçük
(Small Flange Diameter)

14-020911-00 D

B : 93.000

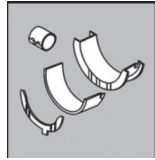
L : 165.000

D : 94.500

C : 5.000

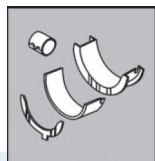
Dış Çap 0,50 mm Farklı
Yarı Mamul (Outside
Diameter 0.50 mm
Different Semi Products)

Ana Yatak
(Main Bearing)



H1018/5 STD

Kol Yatak
(Connecting Rod Bearing)



71-4066/4 STD

Sil. Kapak. Conta
(Cylinder Head Gasket)



AA5940

