



MAN - Ø 108

87-71530-STD



Motor Özellikleri
(Engine Specifications)

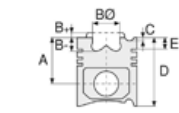
İmalatçı (Manufacturer):
MAN
Çap (Diameter): Ø 108
FM Grup No: 5506

DO836 LOH64
EURO 5

6 Sil. Dizel 6871cc
213KW/290PS
GÜLERYÜZ COBRA GL9L,
GÜLERYÜZ COBRA
GM 280, OTOKAR
VECTIO, TEZELLER
LF 1200

DO834 EURO 4

4 Sil. Dizel 4580cc
110-151KW / 150-206 PS
LFL 50, LFL 51, LFL 52,
LFL 53



Piston Ölçüleri
(Piston Dimensions)

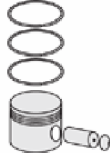
A : 63.900
B- : 18.470
BØ : 77.600
C1 : 1.700
D : 103.000
E : 10.000

Pim: 44 x 88



Piston Özellikleri
(Piston Features)

Segman Taşıyıcı
(Ring Carrier)
Soğutma Kanallı
(Coolin Gallery)
Yağ Püskürtme Oyuğu
(Oil Jet Cut-out)
Burçlu Piston
(Bushing Piston)
Gözarası Konik
(Conical Eye Gap)



Piston Parça No
(Piston Part No)

87-864900-02
87-71530-STD
87-864900-03
87-71530-STD1
0,20 mm Kısa (Short)
87-864900-04
87-71530-STD2
0,40 mm Kısa (Short)

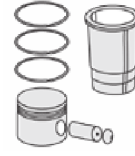


Segman Seti
(Ring Set)

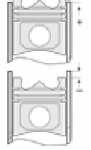
06-864900-20-STD
3.000 CK KV4
2.500 CR GOE
3.000 CK KV1
Yağ Segmanı Matkap
Delik (Oil Ring Drill Hole)



Silindir Gömleği
(Liner)



Silindir Kit
(Assembly Set)



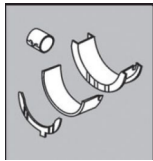
Piston - Blok Montaj
Yüksekliği
(Piston - Block
Assembly Height)

Ana Yatak
(Main Bearing)



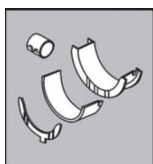
72-4749 STD

Kol Yatak
(Connecting Rod Bearing)



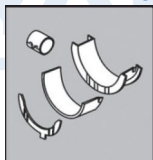
71-4748

Ay Yatak
(Thrust Washer)



A290/4 STD

Kol Burcu
(Small End Bushing)



55-4752 SEMI

