



MAN - Ø 128

87-71535-STDB



Motor Özellikleri
(Engine Specifications)

İmalatçı (Manufacturer):
MAN
Çap (Diameter): Ø 128
FM Grup No: 5463

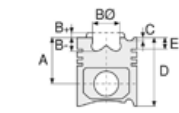
**D2840 LE 401/
LYE/LZE**

10 Sil. Dizel 18270cc 13,5:1
Turbo

Marin , Endüstriyel
(Marine , Industrial)
1994....

**D2848 LE 401/
LYE/LZE**

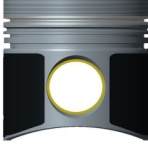
8 Sil. Dizel 14620cc
Marin , Endüstriyel
(Marine , Industrial)



Piston Ölçüleri
(Piston Dimensions)

A : 81.250
B- : 26.640
BØ : 76.000
BX : 2.000
C1 : 1.300
D : 130.300
E : 18.800

Pim: 46 x 105



Piston Özellikleri
(Piston Features)

Segman Taşıyıcı
(Ring Carrier)
Yağ Püskürtme Oyuğu
(Oil Jet Cut-out)
Burçlu Piston
(Bushing Piston)
Gözarası Düz
(Flat Eye Gap)



Piston Parça No
(Piston Part No)

87-283100-22
87-71535-STDB



Segman Seti
(Ring Set)

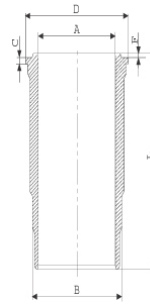
06-283100-40-STD

3.500 CR KV4
3.000 STD
5.000 CR STD

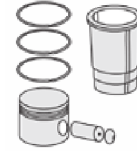


Silindir Gömleği
(Liner)

14-458210-00-WH
B : 144.500
L : 253.000
D : 153.800
C : 10.050
F : 1.000

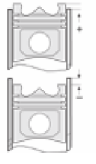


Dış Yüzey Fosfat Kaplı /
O-RING Bilgi
(Outer Surface
Phosphate Coated /
O-RING Information)
24-32448-70/O
2x 138*2,1 FPM
2x 144*4 FPM



Silindir Kit
(Assembly Set)

89-283100-22-STD
89-71535-STDB



Piston - Blok Montaj
Yüksekliği
(Piston - Block
Assembly Height)



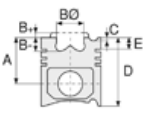


MAN - Ø 128

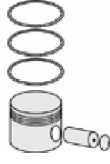
87-71535-STDB



Motor Özellikleri
(Engine Specifications)



Piston Ölçüleri
(Piston Dimensions)



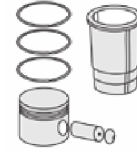
Piston Parça No
(Piston Part No)



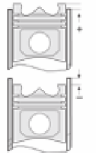
Segman Seti
(Ring Set)



Silindir Gömleği
(Liner)

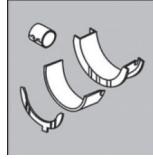


Silindir Kit
(Assembly Set)



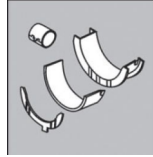
Piston - Blok Montaj
Yüksekliği
(Piston - Block
Assembly Height)

Ana Yatak
(Main Bearing)



H993/6 STD

Kol Yatak
(Connecting Rod Bearing)

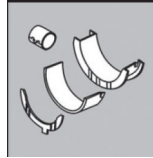


71-3638 STD

71-3289/2 STD

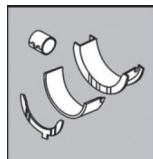
71-2965 STD

Eksantrik Yatak
(Camshaft Bearing)



N110/6L STD

Kol Burcu
(Small End Bushing)



55-2862 SEMI

Silindir Kapak Conta
(Cylinder Head Gasket)



30-026235-10

