



MAN - Ø 128

87-71536-STDB



Motor Özellikleri
(Engine Specifications)

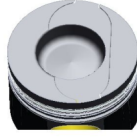
İmalatçı (Manufacturer):
MAN
Çap (Diameter): Ø 128
FM Grup No: 5468

D2842 LE
12 Sil. Dizel 21930cc
497 KW (676 PS) 15,1:1
Marin , Endüstriyel
(Marine , Industrial)
1987....

Piston Ölçüleri
(Piston Dimensions)

A : 81.300
B- : 30.000
BØ : 68.000
BX : 2.000
C1 : 1.200
D : 130.300
E : 18.800

Pim: 46 x 105



Piston Özellikleri
(Piston Features)

Segman Taşıyıcı
(Ring Carrier)
Yağ Püskürtme Oyuğu
(Oil Jet Cut-out)
Burçlu Piston
(Bushing Piston)
Gözarası Düz
(Flat Eye Gap)

Piston Parça No
(Piston Part No)

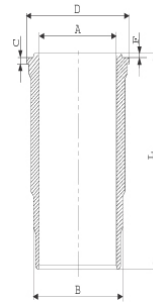
87-283100-93
87-71536-STDB

Segman Seti
(Ring Set)

06-283100-40-STD
3.500 CR KV4
3.000 STD
5.000 CR STD

Silindir Gömleği
(Liner)

14-458210-00-WH
B : 144.500
L : 253.000
D : 153.800
C : 10.050
F : 1.000



Dış Yüzey Fosfat Kaplı /
O-RING Bilgi
(Outer Surface
Phosphate Coated /
O-RING Information)
24-32448-70/O
2x 138*2,1 FPM
2x 144*4 FPM

Silindir Kit
(Assembly Set)

89-283100-93-STD
89-71536-STDB

Piston - Blok Montaj
Yüksekliği
(Piston - Block
Assembly Height)





MAN - Ø 128

87-71536-STDB



Motor Özellikleri
(Engine Specifications)



Piston Ölçüleri
(Piston Dimensions)



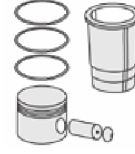
Piston Parça No
(Piston Part No)



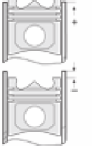
Segman Seti
(Ring Set)



Silindir Gömleği
(Liner)

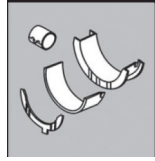


Silindir Kit
(Assembly Set)



Piston - Blok Montaj
Yüksekliği
(Piston - Block
Assembly Height)

Kol Yatak
(Connecting Rod Bearing)

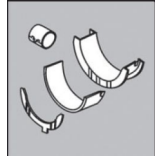


71-3638 STD

71-3289/2 STD

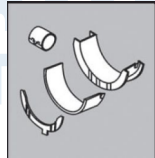
71-2965 STD

Eksantrik Yatak
(Camshaft Bearing)



N110/7 STD

Kol Burcu
(Small End Bushing)



55-2862 SEMI

