



MAN - Ø 108

87-71539-STD



Motor Özellikleri
(Engine Specifications)

İmalatçı (Manufacturer):
MAN
Çap (Diameter): Ø 108
FM Grup No: 5473

D 0834 LFL 41
Euro 3 C.Rail
4 Sil. Dizel 4580cc
132 Kw(180 Hp)
TGL 12.180, TGL 8.180
2006....

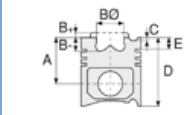
D 0834 LFL 40
Euro 3 C.Rail
4 Sil. Dizel 4580cc
110 Kw(150 Hp)
TGL 8.150
2006....

D 0836 LFL 40
Euro 3 C.Rail
6 Sil. Dizel 6871cc
173 Kw(235 Ps)
TGL 8.240, TGL10.240,
TGL12.240, TGM 13.240,
TGM 18.240
2005....

D 0836 LFL 41
Euro 3 C.Rail
6 Sil. Dizel 6871cc
206 Kw(280 Ps)
TGM 13.280, TGM 18.280
2006....

6 Sil. Dizel 6871cc
240 Kw(326 Ps)
TGM 18.330
2006....

D 0836 LOH 40
Euro 3 C.Rail
6 Sil. Dizel 6871cc
206 Kw(280 Ps)
Lion City, NL 283
2002....



Piston Ölçüleri
(Piston Dimensions)

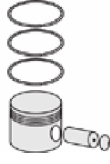
A : 63.900
B- : 17.390
BØ : 65.000
C1 : 1.700
D : 103.000
E : 15.000

Pim: 42 x 86



Piston Özellikleri
(Piston Features)

Segman Taşıyıcı
(Ring Carrier)
Göz Arası Konik
(Conical Between Eyes)



Piston Parça No
(Piston Part No)

87-874100-02
87-71539-STD



Segman Seti
(Ring Set)

06-874100-20-STD

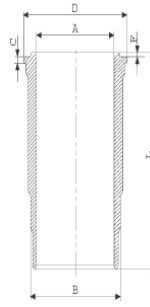
3.000 CK KV4
2.500 F14
3.000 CR KV1

Goetze® LKZ-Ring® /
Yağ Segmanı Matkap Delikli
(Oil Ring Drill Hole)



Silindir Gömleği
(Liner)

14-029250-20-DH
B : 111.500
L : 217.000
D : 115.850
C : 4.000

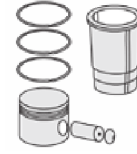


14-029251-20-DH
B : 111.750
L : 217.000
D : 115.850
C : 4.000

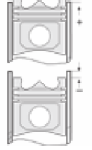
Dış Çap 0,25mm Farklı
(Outer Diameter
0,25 mm Different)

14-029252-20-DH
B : 112.000
L : 217.000
D : 115.850
C : 4.000

Dış Çap 0,50mm Farklı
(Outer Diameter
0,50 mm Different)



Silindir Kit
(Assembly Set)



Piston - Blok Montaj
Yüksekliği
(Piston - Block
Assembly Height)

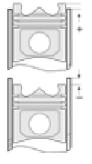
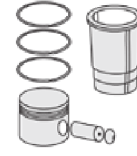
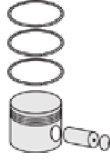
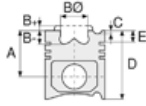
+0,10 /+0,40





MAN - Ø 108

87-71539-STD



Motor Özellikleri
(Engine Specifications)

Piston Ölçüleri
(Piston Dimensions)

Piston Parça No
(Piston Part No)

Segman Seti
(Ring Set)

Silindir Gömleği
(Liner)

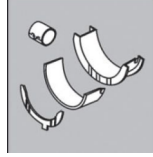
Silindir Kit
(Assembly Set)

Piston - Blok Montaj
Yüksekliği
(Piston - Block
Assembly Height)

D 0836 LOH
41 Euro 3 C.Rail
6 Sil. Dizel 6871cc
176 Kw(239 Ps)
NL243
2002....

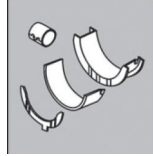
D 0836 LOH 50
Euro 3 C.Rail
6 Sil. Dizel 6871cc
Sabit Motor (Fixed
Engine)

Ana Yatak
(Main Bearing)



H082/5 STD

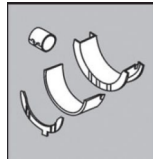
Kol Yatak
(Connecting Rod Bearing)



71-3939 STD

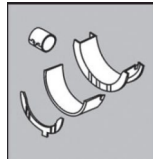
71-3938/6 STD

Eksantrik Yatak
(Camshaft Bearing)



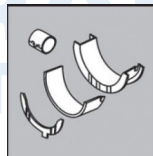
N150/5 STD

Ay Yatak
(Thrust Washer)



A158/4 STD

Kol Burcu
(Small End Bushing)



55-3946 SEMI

