



MAN - Ø 108

87-71540-STDA



Motor Özellikleri
(Engine Specifications)

İmalatçı (Manufacturer):
MAN
Çap (Diameter): Ø 108
FM Grup No: 5425

D 0824 LFLO1 EURO1

4 Sil. Dizel 4580cc
114 Kw (155 PS) 17:1
10.153, 12.153 FL KAMYON,
14.152, 8.153, 8.153F,
8.163F, 9.153, 9.153 F,
9.163F
1997 - 2000

**D 0824 LF01,02,03,
04,05,06,07,08,09,
10 LOH 01 EURO 1**

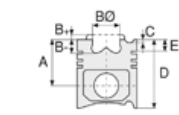
4 Sil. Dizel 4580cc
155 PS (114 kW) 15,5:1
10.153, 12.154, 14.152,
7.153, 8.153F, 8.163F,
9.163F
1988 - 1996

**D 0826 LF213,LFLO3,
LUHO9,LUH12,LUH13**

6 Sil. Dizel 6600cc
169-198 kW(230-269 Ps)
16,5:1
10.153F, 10.163F, 18.232
1988 - 1994

**D 0826 LFLO1,LFLO2,
LFLO5 EURO 1**

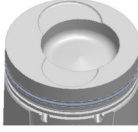
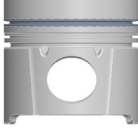
6 Sil. Dizel 6871cc
114 kW (155 Ps) 16.5:1
10.153F, 10.163F, 10.253,
18.232, 8.153, 8.223, 9.223
1988 - 1997



Piston Ölçüleri
(Piston Dimensions)

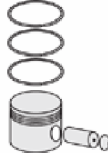
A : 73.000
B - : 21.250
BØ : 63.000
BX : 6.000
C1 : 1.700
D : 113.000
E : 20.000

Pim: 40 x 90



Piston Özellikleri
(Piston Features)

Segman Taşıyıcı
(Ring Carrier)
Yağ Püskürtme Oyuğu
(Oil Spray Groove)
Gözarası Konik
(Conical Eye Gap)



Piston Parça No
(Piston Part No)

87-285900-43
87-71540-STDA1A
- 0,20 mm Kısa (Short)
87-285900-42
87-71540-STDA



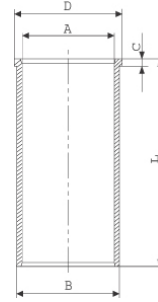
Segman Seti
(Ring Set)

06-285900-20-STD
3.000 CR IKA
2.500 STD
4.000 CR STD

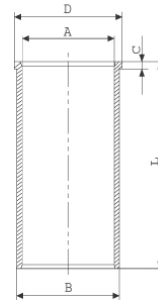


Silindir Gömleği
(Liner)

14-021860-00-D
B : 111.600
L : 217.000
D : 115.850
C : 4.100



14-029250-20-DH
B : 111.500
L : 217.000
D : 115.850
C : 4.000

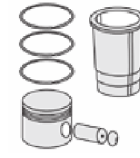


14-029251-20-DH
B : 111.750
L : 217.000
D : 115.850
C : 4.000

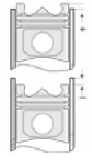
Dış Çap 0,25mm Farklı
(Outer Diameter
0,25 mm Different)

14-029252-20-DH
B : 112.000
L : 217.000
D : 115.850
C : 4.000

Dış Çap 0,50mm Farklı
(Outer Diameter
0,50 mm Different)



Silindir Kit
(Assembly Set)



Piston - Blok Montaj
Yüksekliği
(Piston - Block
Assembly Height)

+0,10 / +0,40



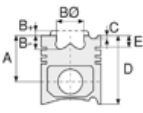


MAN - Ø 108

87-71540-STD



Motor Özellikleri
(Engine Specifications)



Piston Ölçüleri
(Piston Dimensions)



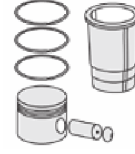
Piston Parça No
(Piston Part No)



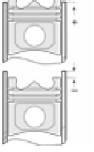
Segman Seti
(Ring Set)



Silindir Gömleği
(Liner)

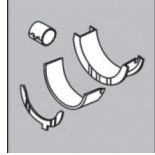


Silindir Kit
(Assembly Set)



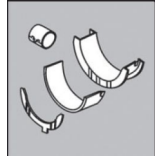
Piston - Blok Montaj
Yüksekliği
(Piston - Block
Assembly Height)

Ana Yatak
(Main Bearing)



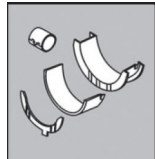
H049/5 STD

Kol Yatak
(Connecting Rod Bearing)



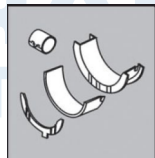
71-3660/4 STD

Eksantrik Yatak
(Camshaft Bearing)



N1254 STD

Kol Burcu
(Small End Bushing)



55-3486 SEMI

