



MAN - Ø 108

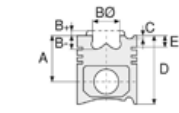
87-71553-STD



**Motor Özellikleri**  
(Engine Specifications)

İmalatçı (Manufacturer):  
MAN  
Çap (Diameter): Ø 108  
FM Grup No: 5406

D 0826 LFO1/O2  
6 Sil. Dizel 6871cc  
141/169 Kw  
(192/230 PS) 16,5:1  
12.232,12.192,  
14.232,14.192,  
17.232,17.192,  
18.232,18.192,  
24.232,24.192  
1988 - 1995



**Piston Ölçüleri**  
(Piston Dimensions)

A : 73.000  
B - : 21.350  
BØ : 63.000  
BX : 6.000  
C1 : 1.700  
D : 113.000  
E : 20.000

Pim: 40 x 90



**Piston Özellikleri**  
(Piston Features)

Segman Taşıyıcı  
(Ring Carrier)  
Sert Anotlama  
(Hard Anodizing)  
Yağ Püskürtme Oyuğu  
(Oil Jet Cut-out)  
Gözarası Konik  
(Conical Eye Gap)



**Piston Parça No**  
(Piston Part No)

87-285900-22  
87-71553-STD  
87-285900-23  
87-71553-STD1A  
0,20 mm Kısa (Short)  
87-285900-24  
87-71553-STD2A  
0,40 mm Kısa (Short)  
87-285900-33  
87-71553-STD3A  
0,60 mm Kısa (Short)



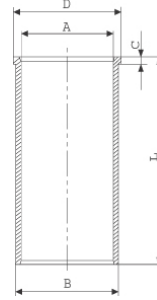
**Segman Seti**  
(Ring Set)

06-285900-20-STD  
3.000 CR IKA  
2.500 STD  
4.000 CR STD  
Goetze® LKZ-Ring®

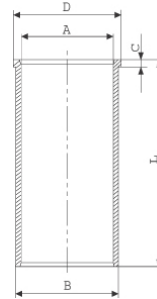


**Silindir Gömleği**  
(Liner)

14-021860-00-D  
B : 111.600  
L : 217.000  
D : 115.850  
C : 4.100



14-029250-20-DH  
B : 111.500  
L : 217.000  
D : 115.850  
C : 4.000

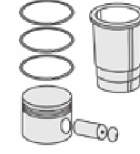


14-029251-20-DH  
B : 111.750  
L : 217.000  
D : 115.850  
C : 4.000

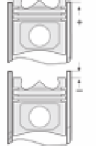
Dış Çap 0,25mm Farklı  
(Outer Diameter  
0,25 mm Different)

14-029252-20-DH  
B : 112.000  
L : 217.000  
D : 115.850  
C : 4.000

Dış Çap 0,50mm Farklı  
(Outer Diameter  
0,50 mm Different)



**Silindir Kit**  
(Assembly Set)



**Piston - Blok Montaj**  
Yüksekliği  
(Piston - Block  
Assembly Height)

+ 0,15 / +0,32





MAN - Ø 108

87-71553-STD



**Motor Özellikleri**  
(Engine Specifications)



**Piston Ölçüleri**  
(Piston Dimensions)



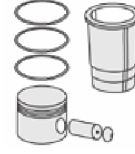
**Piston Parça No**  
(Piston Part No)



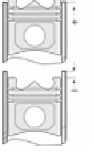
**Segman Seti**  
(Ring Set)



**Silindir Gömleği**  
(Liner)

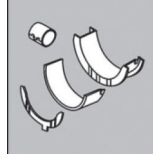


**Silindir Kit**  
(Assembly Set)



**Piston - Blok Montaj**  
**Yüksekliği**  
(Piston - Block  
Assembly Height)

**Ana Yatak**  
(Main Bearing)



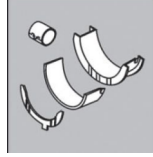
H049/7 STD

**Kol Yatak**  
(Connecting Rod Bearing)



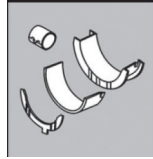
71-3660/6 STD

**Kol Burcu**  
(Small End Bushing)



55-3486 SEMI

**Eksantrik Yatak**  
(Camshaft Bearing)



N125/4 STD

**Sil. Kapak. Conta**  
(Cylinder Head Gasket)



30-026468-00

BV500



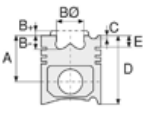


MAN - Ø 108

87-71553-STD



**Motor Özellikleri**  
(Engine Specifications)



**Piston Ölçüleri**  
(Piston Dimensions)



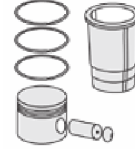
**Piston Parça No**  
(Piston Part No)



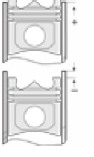
**Segman Seti**  
(Ring Set)



**Silindir Gömleği**  
(Liner)



**Silindir Kit**  
(Assembly Set)



**Piston - Blok Montaj**  
**Yüksekliği**  
(Piston - Block  
Assembly Height)

**Üst Bölüm Takım Conta**  
(Upper Part Kit Gasket)



21-26468-22/0

**Alt Bölüm Takım Conta**  
(Lower Section Kit Gasket)



22-25060-00/0

**Full Takım Conta**  
(Full Set Gasket)



20-26468-04/0

