



MAN - Ø 121

87-71563-STD



Motor Özellikleri
(Engine Specifications)

İmalatçı (Manufacturer):
MAN
Çap (Diameter): Ø 121
FM Grup No: 5414

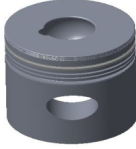
D 2146 HM11/M9

6 Sil. Dizel 9659cc
158 Kw (212 PS) 17:1
0145 SERİSİ
KAMYONLAR,
10.210, 10.212,
1070, 1080,
1580, 2180,
770, 78
1966 - 1975

Piston Ölçüleri
(Piston Dimensions)

A : 98.940
B - : 48.600
BØ : 46.000
D : 171.940
E : 20.000

Pim: 48 x 100



Piston Özellikleri
(Piston Features)

Segman Taşıyıcı
(Ring Carrier)
Sert Anotlama
(Hard Anodizing)
Gözarası Düz
(Flat Eye Gap)



Piston Parça No
(Piston Part No)

87-274800-02
87-71563-STD



Segman Seti
(Ring Set)

06-274800-20-STD

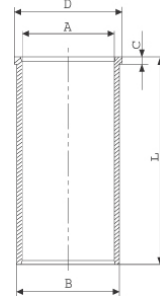
3.500 CR IKA
3.000 STD
3.000 STD
5.500 CR STD



Silindir Gömleği
(Liner)

14-020560-00-D

B : 126.100
L : 287.000
D : 132.000
C : 8.200



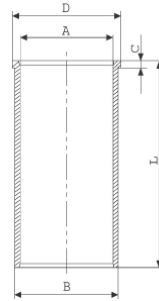
14-020561-00-D

B : 126.600
L : 287.000
D : 132.000
C : 8.200

Dış çap 0,50 mm Farklı
(Outer Diameter
0,50 mm Different)

14-022830-00-DH

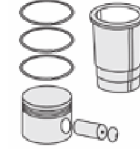
B : 125.990
L : 287.000
D : 132.000
C : 8.000



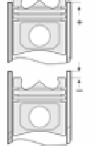
14-022831-00-DH

B : 126.490
L : 287.000
D : 132.000
C : 8.000

Dış çap 0,50 mm farklı
(Outer Diameter
0,50 mm Different)



Silindir Kit
(Assembly Set)



Piston - Blok Montaj
Yüksekliği
(Piston - Block
Assembly Height)

+ 0,05 / + 0,35





MAN - Ø 121

87-71563-STD



Motor Özellikleri
(Engine Specifications)



Piston Ölçüleri
(Piston Dimensions)



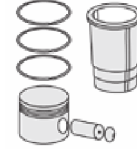
Piston Parça No
(Piston Part No)



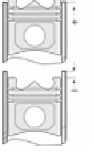
Segman Seti
(Ring Set)



Silindir Gömleği
(Liner)

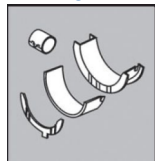


Silindir Kit
(Assembly Set)



Piston - Blok Montaj
Yüksekliği
(Piston - Block
Assembly Height)

Kol Yatak
(Connecting Rod Bearing)



71-3004 STD

Silindir Kapak Conta
(Cylinder Head Gasket)



DG071

