



MAN - Ø 125

87-71570-STDB



Motor Özellikleri
(Engine Specifications)

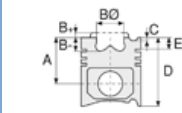
İmalatçı (Manufacturer):
MAN
Çap (Diameter): Ø 125
FM Grup No: 5420

D 2565 MT/MK/MKUL

5 Sil. Dizel 9510cc
169,5 Kw (230 PS) 17:1
32.321 DFAS/DF/
DFS/DFK/DFAK,
BUS 297/298,
SR240, SR260
1978....

D 2566

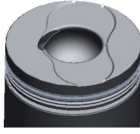
6 Sil. Dizel 11407cc
162/235 Kw
(220/320) 17:1
19.280 F/FL/FT/FK/
FS/FAS/FAK/D,
19.281 F/FL/FK/FS/
FAS/FAK/U/UL,
19.321, 22.280 FNL,
22.281 FNL, 22.321
UNL, 26.280
DF/DFK/DFS/DFAS/
DHAK/DH, 26.321
DF/DFS/DFK/DFAS/
DFAK, 30.280 VF/
DHAK, 32.281 DHAK/
DHK/DF/DFS/DFK/
DFA, 32.321 DFAS/
DF/DFS/DFK/DFAK,
SR240, SR260,
SR280/297/298
1976....



Piston Ölçüleri
(Piston Dimensions)

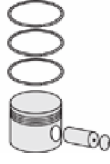
A : 89.800
B - : 43.000
BØ : 52.000
C1 : 1.700
D : 141.800
E : 18.700

Pim: 46 x 105



Piston Özellikleri
(Piston Features)

Segman Taşıyıcı
(Ring Carrier)
Sert Anotlama
(Hard Anodizing)
Yağ Püskürtme Oyuğu
(Oil Jet Cut-out)
Gözarası Düz
(Flat Eye Gap)



Piston Parça No
(Piston Part No)

87-280400-42
87-71570-STDB
87-280400-43
87-71570-STDB
0,20mm Kısa (Short)

87-280400-44
87-71570-STDB
0,40mm Kısa (Short)



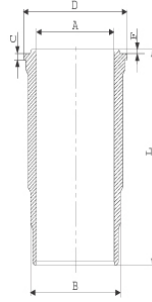
Segman Seti
(Ring Set)

06-280400-40-STD
3.500 CR KV4
3.000 STD
5.000 CR STD
Goetze® LKZ-Ring®



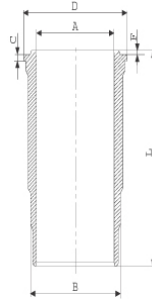
Silindir Gömleği
(Liner)

14-450370-00-WH
B : 140.000
L : 270.000
D : 152.000
C : 10.050
F : 1.000

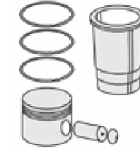


O-RING Bilgi
(O-RING Information)
24-32371-30/O
2x 138*2,1 FPM
2x 140*4 FPM

14-452880-00-WH
B : 140.000
L : 270.000
D : 152.000
C : 10.550
F : 1.000

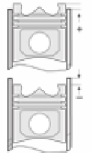


Flanş 0,50mm Farklı
(Flange 0,50mm
Different)



Silindir Kit
(Assembly Set)

89-280400-42-STD
89-71570-STDB



Piston - Blok Montaj
Yüksekliği
(Piston - Block
Assembly Height)

0 / + 0,32



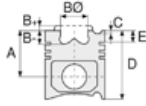


MAN - Ø 125

87-71570-STDB



Motor Özellikleri
(Engine Specifications)



Piston Ölçüleri
(Piston Dimensions)



Piston Parça No
(Piston Part No)

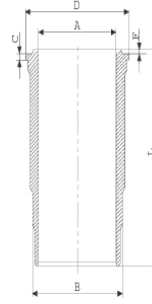


Segman Seti
(Ring Set)



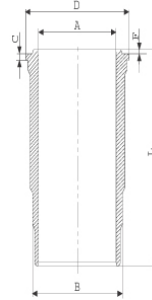
Silindir Gömleği
(Liner)

14-454560-00-WH
B : 140.000
L : 270.000
D : 152.000
C : 10.250
F : 1.000

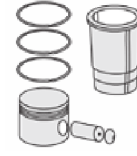


Flanş 0,20mm Farklı
(Flange 0,20mm
Different)

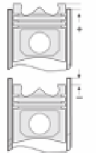
14-455690-00-WH
B : 140.000
L : 270.000
D : 152.000
C : 10.050
F : 1.000



Dış Yüzeyi
Fosfat Kaplı
(Outer Surface
Phosphate Coated)



Silindir Kit
(Assembly Set)



Piston - Blok Montaj
Yüksekliği
(Piston - Block
Assembly Height)

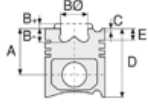


MAN - Ø 125

87-71570-STD B



Motor Özellikleri
(Engine Specifications)



Piston Ölçüleri
(Piston Dimensions)



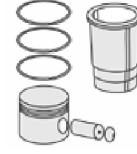
Piston Parça No
(Piston Part No)



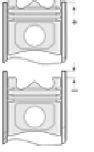
Segman Seti
(Ring Set)



Silindir Gömleği
(Liner)

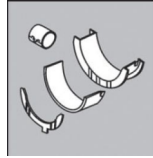


Silindir Kit
(Assembly Set)



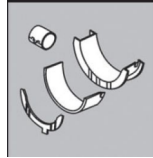
Piston - Blok Montaj
Yüksekliği
(Piston - Block
Assembly Height)

Ana Yatak
(Main Bearing)



H992/7 STD

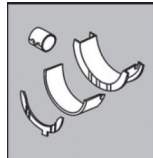
Kol Yatak
(Connecting Rod Bearing)



71-3561/6 STD

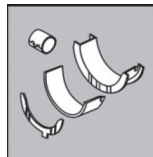
71-2965 STD

Eksantrik Yatak
(Camshaft Bearing)



N109/7L STD

Kol Burcu
(Small End Bushing)



55-2862 SEMI

55-4747 SEMI