



MAN - Ø 125

87-71572-STD A



Motor Özellikleri
(Engine Specifications)

İmalatçı (Manufacturer):
MAN
Çap (Diameter): Ø 125
FM Grup No: 5450

D 2548 MT/MTF

8 Sil. Dizel 13940cc
360 PS 17:1
Turbo
Endüstriyel (Industrial)
- 1974

D 2540 MT/MTE/MTF

10 Sil. Dizel 17426cc
390/550 PS 17:1
Turbo
Endüstriyel (Industrial)
- 1974

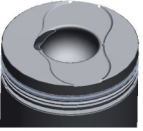
D 2542 MTE/MLE

12 Sil. Dizel 20190cc
570/650 PS 17:1
Turbo
Endüstriyel (Industrial)
- 1974

Piston Ölçüleri
(Piston Dimensions)

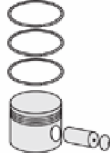
A : 81.300
B- : 37.000
BØ : 49.500
D : 130.300
E : 18.700

Pim: 46 x 105



Piston Özellikleri
(Piston Features)

Segman Taşıyıcı
(Ring Carrier)
Sert Anotlama
(Hard Anodizing)
Soğutma Kanallı
(Coolin Gallery)
Yağ Püskürtme Oyuğu
(Oil Jet Cut-out)
Gözarası Konik
(Conical Eye Gap)



Piston Parça No
(Piston Part No)

87-873600-12
87-71572-STD A



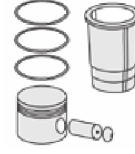
Segman Seti
(Ring Set)

06-873600-20-STD

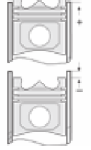
3.500 CR KV4
3.000 GOE
3.000 GOE
5.000 CR GOE



Silindir Gömleği
(Liner)



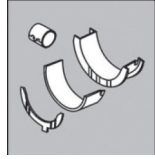
Silindir Kit
(Assembly Set)



Piston - Blok Montaj
Yüksekliği
(Piston - Block
Assembly Height)

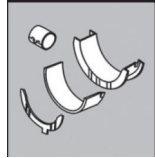
0 / +0,32

Ana Yatak
(Main Bearing)



H993/5 STD

Kol Yatak
(Connecting Rod Bearing)

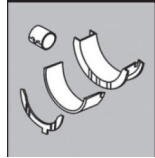


71-3638 STD

71-2965 STD

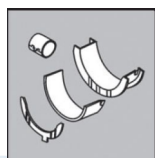
71-3289/2 STD

Eksantrik Yatak
(Camshaft Bearing)



N110/6L STD

Kol Burcu
(Small End Bushing)



55-2862 SEMI

Silindir Kapak Conta
(Cylinder Head Gasket)



30-025059-10

