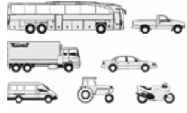




MAN - Ø 120

87-71583-STDA



**Motor Özellikleri**  
(Engine Specifications)

İmalatçı (Manufacturer):  
MAN  
Çap (Diameter): Ø 120  
FM Grup No: 5445

**D 2066LFO1 EURO**  
**3 C. RAIL**

6 Sil. Dizel 10518cc  
307 KW (430 PS)  
16 Valve  
TGA18.430,  
TGA33.430,  
TGA41.430  
2006....

**D 2066LFO2 EURO**  
**3 C. RAIL**

6 Sil. Dizel 10518cc  
279 KW (390 PS)  
16 Valve  
TGA18.390,  
TGA39.390  
2006....

**D 2066LFO6 EURO**  
**3 C. RAIL**

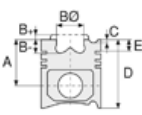
6 Sil. Dizel 10518cc  
286 KW (400 PS)  
16 Valve  
TGA19.400,  
TGA41.400  
2006....

**D 2066LFO7 EURO**  
**3 C. RAIL**

6 Sil. Dizel 10518cc  
265 KW (360 PS)  
16 Valve  
TGA18.390,  
TGA39.390  
2006....

**D 2066LFO3/04/11/**  
**12/13/14/21/22/31-35**

6 Sil. Dizel 10518cc  
265 KW (360 PS)  
16 Valve  
2006....



**Piston Ölçüleri**  
(Piston Dimensions)

A : 76.800  
B - : 20.000  
BØ : 70.000  
C1 : 2.000  
C2 : 1.600  
D : 123.300  
E : 10.000

Pim: 52 x 96



**Piston Özellikleri**  
(Piston Features)

Segman Taşıyıcı  
(Ring Carrier)  
Soğutma Kanallı  
(Coolin Gallery)  
Gözarası Konik  
(Conical Eye Gap)



**Piston Parça No**  
(Piston Part No)

87-874000-12  
87-71583-STDA



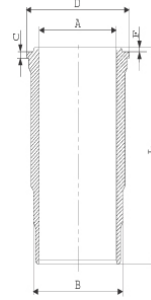
**Segman Seti**  
(Ring Set)

06-874000-20-STD  
3.500 CR KV4  
3.000 CR GOE  
4.000 CR GOE  
Goetze® LKZ-Ring® /  
Yağ Segmanı Matkap  
Delik (Oil Ring Drill Hole)



**Silindir Gömleği**  
(Liner)

14-450630-00-WH  
B : 139.500  
L : 260.000  
D : 150.000  
C : 8.070



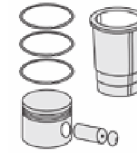
Dış Yüzeyi Fosfat Kaplı /  
O-RING Bilgi  
(Outer Surface  
Phosphate Coated /  
O-RING Information)  
24-35043-60/O  
2x 139,5\*3,95\*4,70 FPM

14-450631-00-WH  
B : 139.500  
L : 260.000  
D : 150.000  
C : 8.570

Flanş ve Boğaz  
Alt Çapı 0,50mm Farklı  
(Flange and Throat  
Bottom Diameter  
0,50mm Different)

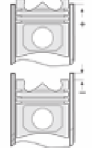
14-450632-00-WH  
B : 139.500  
L : 260.000  
D : 150.000  
C : 9.070

Flanş ve Boğaz Alt  
Çapı 1,00mm Farklı  
(Flange and Throat  
Bottom Diameter  
1,00 mm Different)



**Silindir Kit**  
(Assembly Set)

89-874000-12-STD  
89-71583-STDA



**Piston - Blok Montaj**  
**Yüksekliği**  
(Piston - Block  
Assembly Height)

+0,20 /+0,30



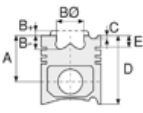


MAN - Ø 120

87-71583-STD A



**Motor Özellikleri**  
(Engine Specifications)



**Piston Ölçüleri**  
(Piston Dimensions)



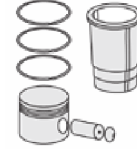
**Piston Parça No**  
(Piston Part No)



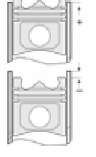
**Segman Seti**  
(Ring Set)



**Silindir Gömleği**  
(Liner)



**Silindir Kit**  
(Assembly Set)



**Piston - Blok Montaj**  
Yüksekliği  
(Piston - Block  
Assembly Height)

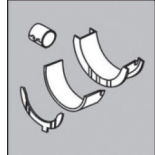
**Ana Yatak**  
(Main Bearing)



H1239/7 STD

H1080/5 STD

**Kol Yatak**  
(Connecting Rod Bearing)

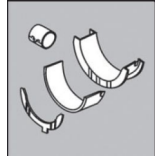


71-4529 STD

71-4746 STD

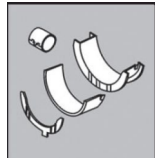
01-4202/4 STD

**Eksantrik Yatak**  
(Camshaft Bearing)



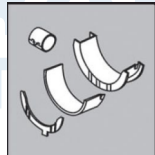
034727 STD

**Ay Yatak**  
(Thrust Washer)



A159/4 STD

**Kol Burcu**  
(Small End Bushing)



55-4532 SEMI

