



IVECO LKW - Ø 135

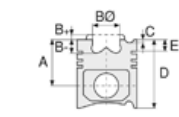
87-71700-STD



Motor Özellikleri
(Engine Specifications)

İmalatçı (Manufacturer):
IVECO LKW
Çap (Diameter): Ø 135
FM Grup No: 4081

F3B3681A EURO 4/5
6 Sil. Dizel 12880cc
301-412 KW-410-510 PS
CURSOR 13 E56



Piston Ölçüleri
(Piston Dimensions)

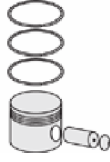
A : 90.400
B- : 23.100
BØ : 94.000
D : 142.400
E : 7.500

Pim: 54 x 107



Piston Özellikleri
(Piston Features)

Segman Taşıyıcı
(Ring Carrier)
Soğutma Kanallı
(Coolin Gallery)
Yağ Püskürtme Oyuğu
(Oil Jet Cut-out)
Burçlu Piston
(Bushing Piston)
Gözarası Konik
(Conical Eye Gap)



Piston Parça No
(Piston Part No)

87-428000-02
87-71700-STD



Segman Seti
(Ring Set)

06-428000-20-STD

3.000 CKS KV1
3.000 CR F14
5.000 CR GOE

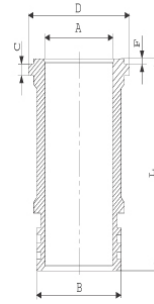
Goetze® LKZ-Ring®



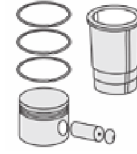
Silindir Gömleği
(Liner)

14-260050-00-WH

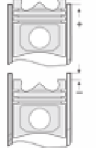
B : 151.000
L : 254.000
D : 161.600
C : 9.960
F : 1.200



Dış Yüzeyi Fosfat
Kaplı / O-RING Bilgi
(Outer Surface
Phosphate Coated /
O-RING Information)
24-35043-80/O
3x 145,60*3,53 FPM



Silindir Kit
(Assembly Set)



Piston - Blok Montaj
Yüksekliği
(Piston - Block
Assembly Height)





Motor Özellikleri
(Engine Specifications)



Piston Ölçüleri
(Piston Dimensions)



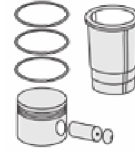
Piston Parça No
(Piston Part No)



Segman Seti
(Ring Set)



Silindir Gömleği
(Liner)

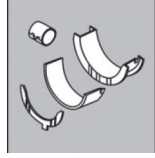


Silindir Kit
(Assembly Set)



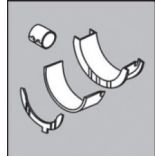
Piston - Blok Montaj
Yüksekliği
(Piston - Block
Assembly Height)

Ana Yatak
(Main Bearing)



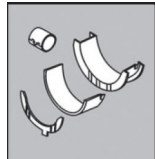
H1023/7 STD

Kol Yatak
(Connecting Rod Bearing)



71-4095/6 STD

Kol Burcu
(Small End Bushing)



55-4098 SEMI

Sil. Kapak Conta
(Cylinder Head Gasket)



AG9360

Üst Takım Conta
(Cylinder Head Full Gasket)



CG9361

Full Takım Conta
(Full Set Gasket)



FG9361

