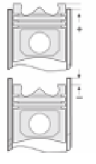
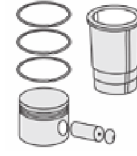
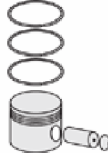
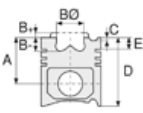




DAF - Ø 118

87-72471-STD



Motor Özellikleri
(Engine Specifications)

Piston Ölçüleri
(Piston Dimensions)

Piston Parça No
(Piston Part No)

Segman Seti
(Ring Set)

Silindir Gömleği
(Liner)

Silindir Kit
(Assembly Set)

Piston - Blok Montaj
Yüksekliği
(Piston - Block
Assembly Height)

İmalatçı (Manufacturer):
DAF
Çap (Diameter): 118
FM Grup No: 2208

A : 95.000
B- : 26.250
BØ : 61.000
BX : 3.000
BY : 1.500
D : 152.000
E : 23.000

87-182500-02
87-72471-STD

06-182500-20-STD

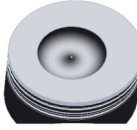
14-024070-00-DH
B : 123.500
L : 262.000
D : 133.600
C : 10.050

0 / +0,25

DH825

6 Sil. Dizel 8250cc
163 Kw (222PS)
Direkt Enjeksiyon
(Direct Injection)
F 1800 Serisi,
F 2000 Serisi,
F 2100 Serisi,
F 2200 Serisi,
SB2000/5 Serisi,
TB2100 Serisi
1969...

Pim: 42 x 99



DHB825

6 Sil. Dizel 8250cc
201 Kw (148PS)
Turbocharged
F 2000 Serisi
1969...

Piston Özellikleri
(Piston Features)

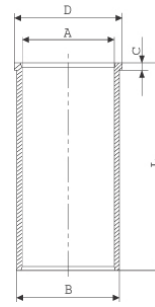
Segman Taşıyıcı
(Ring Carrier)
Çelik Plaka
(Steel Strut)
Gözarası Düz
(Flat Eye Gap)

DHR825

6 Sil. Dizel 8250cc
204 Kw (150PS)
Turbocharged
F 1800 Serisi,
F 2100 Serisi,
F 2300 Serisi,
SB2000/5 Serisi
1969...

DHTD825

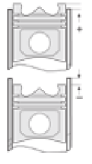
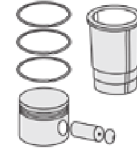
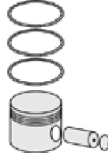
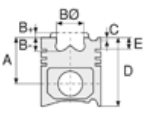
6 Sil. Dizel 8250cc
218 Kw (160PS)
Turbocharged
F 1800 Serisi,
F 2100 Serisi,
F 2300 Serisi,
SB2300/5 Serisi
1969...





DAF - Ø 118

87-72471-STD



Motor Özellikleri
(Engine Specifications)

Piston Ölçüleri
(Piston Dimensions)

Piston Parça No
(Piston Part No)

Segman Seti
(Ring Set)

Silindir Gömleği
(Liner)

Silindir Kit
(Assembly Set)

Piston - Blok Montaj
Yüksekliği
(Piston - Block
Assembly Height)

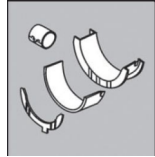
DHT825
6 Sil. Dizel 8250cc
215 Kw (158PS)
Turbocharged
F 2100 Serisi,
F 2300 Serisi,
TB2100 Serisi

DU825
6 Sil. Dizel 8250cc
216 Kw (159PS)
Turbocharged
F 2200 Serisi
1969...

DHU825
6 Sil. Dizel 8250cc
230 Kw (169PS)
Turbocharged
F 2300 Serisi,
SB2000/5 Serisi
1969...

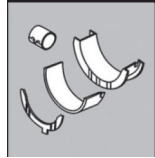
DHS825
6 Sil. Dizel 8250cc
265 Kw (195PS)
Turbocharged Intercool
F 2500 Serisi,
SB2300/5 Serisi
1969...

Ana Yatak
(Main Bearing)



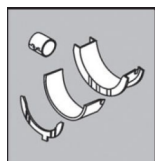
H1254/7 STD

Kol Yatak
(Connecting Rod Bearing)



71-4383/6 STD

Ay Yatak
(Thrust Washer)



A022/4 STD

Silindir Kapak Conta
(Cylinder Head Gasket)



DN660

