



DAF - Ø 130

87-72472-STDF



**Motor Özellikleri**  
(Engine Specifications)

İmalatçı (Manufacturer):  
DAF  
Çap (Diameter): 130  
FM Grup No: 2215

**XF 250M Euro2**

6 Sil. Dizel 12583cc  
250 Kw (340PS) 16:1  
Turbocharged Intercool  
85 340  
1998...

**XF 315M Euro2**

6 Sil. Dizel 12583cc  
250 Kw (340PS) 16:1  
Turbocharged Intercool  
85 430, 95 430, 95 480  
1998...

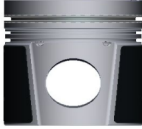
**XF 355M Euro2**

6 Sil. Dizel 12583cc  
250 Kw (340PS) 16:1  
Turbocharged Intercool  
95 480  
1998...

**Piston Ölçüleri**  
(Piston Dimensions)

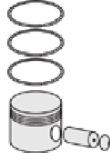
A : 95.000  
B- : 21.750  
BØ : 82.000  
C1 : 1.000  
D : 143.000  
E : 20.100

Pim: 52 x 106



**Piston Özellikleri**  
(Piston Features)

Segman Taşıyıcı  
(Ring Carrier)  
Gözarası Konik  
(Conical Eye Gap)



**Piston Parça No**  
(Piston Part No)

87-841500-73  
87-72472-STDF  
0,20mm Kısa (Short)  
87-841500-72  
87-72472-STDF



**Segman Seti**  
(Ring Set)

06-841500-20-STD  
4.000 CK KVI  
3.160 IKA  
4.000 CRP STD

Goetze® LKZ-Ring® /  
Yağ Segmanı Matkap  
Delikli (Oil Ring Drill  
Perforated)

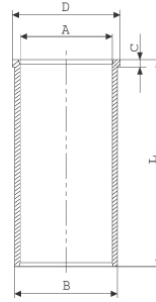


**Silindir Gömleği**  
(Liner)

14-020840-00-DH  
B : 136.010  
L : 288.300  
D : 143.600  
C : 10.050

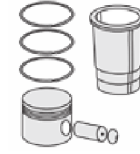


14-021410-00-DH  
B : 136.020  
L : 288.300  
D : 143.600  
C : 10.050

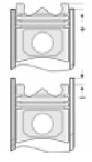


14-021411-00-DH  
B : 136.270  
L : 288.300  
D : 143.600  
C : 10.050

Dış Çap 0,25mm Farklı  
(Outer Diameter  
0,25mm Different)



**Silindir Kit**  
(Assembly Set)



**Piston - Blok Montaj**  
Yüksekliği  
(Piston - Block  
Assembly Height)

0 / +0,25





DAF - Ø 130

87-72472-STD F



**Motor Özellikleri**  
(Engine Specifications)



**Piston Ölçüleri**  
(Piston Dimensions)



**Piston Parça No**  
(Piston Part No)



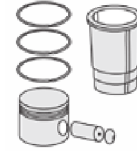
**Segman Seti**  
(Ring Set)



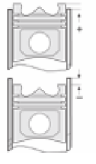
**Silindir Gömleği**  
(Liner)

14-021412-00-DH  
B : 136.520  
L : 288.300  
D : 143.600  
C : 10.050

Dış Çap 0,50mm Farklı  
(Outer Diameter  
0,50mm Different)

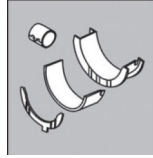


**Silindir Kit**  
(Assembly Set)



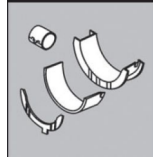
**Piston - Blok Montaj**  
**Yüksekliği**  
(Piston - Block  
Assembly Height)

**Ana Yatak**  
(Main Bed)



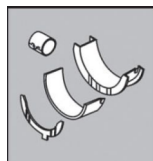
H005/7P STD  
H022/7P STD

**Kol Yatak**  
(Connecting Rod Bearing)



71-3631/6P STD  
71-4785 STD

**Ay Yatak**  
(Thrust Washer)



A023/4 STD

**Kol Burcu**  
(Small End Bushing)



55-3793 SEMI

