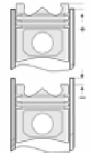
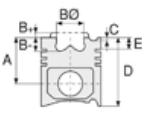




DAF - Ø 130

87-72474-STD



Motor Özellikleri
(Engine Specifications)

İmalatçı (Manufacturer):
DAF
Çap (Diameter): 130
FM Grup No: 2260

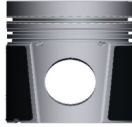
XE 280C1 EURO3
6 Sil. Dizel 12583cc
280 Kw (381 PS) 17,4:1
Turbo, Intercooler 24 v
CF 95.380
2001...

XE 315C1 EURO3
6 Sil. Dizel 12583cc
315 Kw (428 PS) 17,4:1
Turbo, Intercooler 24 v
CF 85.430, CF 95.430,
CF 95.480, CF 95.530
1998...

Piston Ölçüleri
(Piston Dimensions)

A : 95.000
B- : 15.440
BØ : 99.600
C1 : 1.000
D : 143.000
E : 20.000

Pim: 52 x 106



Piston Özellikleri
(Piston Features)

Segman Taşıyıcı
(Ring Carrier)
Yağ Püskürtme Oyuğu
(Oil Jet Cut-out)
Gözarası Konik
(Conical Eye Gap)

Piston Parça No
(Piston Part No)

87-841500-02
87-72474-STD

Segman Seti
(Ring Set)

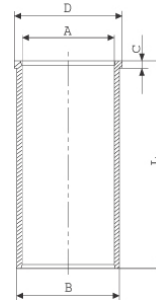
06-841500-20-STD

4.000 CK KVI
3.160 IKA
4.000 CRP STD

Goetze® LKZ-Ring® /
Yağ segmanı matkap
delikli (Oil Ring Drill
Perforated)

Silindir Gömleği
(Liner)

14-021410-00-DH
B : 136.020
L : 288.300
D : 143.600
C : 10.050



14-021411-00-DH
B : 136.270
L : 288.300
D : 143.600
C : 10.050

Dış Çap 0,25mm Farklı
(Outer Diameter
0,25mm Different)

14-021412-00-DH
B : 136.520
L : 288.300
D : 143.600
C : 10.050

Dış Çap 0,50mm Farklı
(Outer Diameter
0,50mm Different)

Silindir Kit
(Assembly Set)

Piston - Blok Montaj
Yüksekliği
(Piston - Block
Assembly Height)



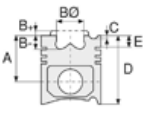


DAF - Ø 130

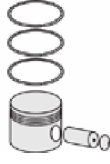
87-72474-STD



Motor Özellikleri
(Engine Specifications)



Piston Ölçüleri
(Piston Dimensions)



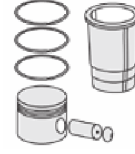
Piston Parça No
(Piston Part No)



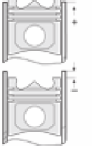
Segman Seti
(Ring Set)



Silindir Gömleği
(Liner)

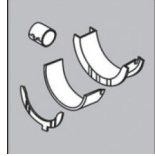


Silindir Kit
(Assembly Set)



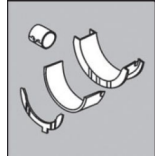
Piston - Blok Montaj
Yüksekliği
(Piston - Block
Assembly Height)

Ana Yatak
(Main Bearing)



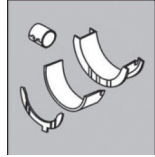
H005/7P STD

Kol Yatak
(Connecting Rod Bearing)



71-3919/6 STD

Eksantrik Yatak
(Camshaft Bearing)



N194/4 STD

Kol Burcu
(Small End Bushing)



55-3950 SEMI

