



MERCEDES BENZ LKW - Ø 102

87-72534-STD



**Motor Özellikleri**  
(Engine Specifications)

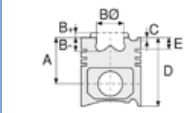
İmalatçı (Manufacturer):  
MERCEDES BENZ LKW  
Çap (Diameter): Ø 102  
FM Grup No: 590112

**OM 904 LA Euro4**

4 Sil. Dizel 4250cc  
115-130 KW  
(156-177 PS) 17,4:1  
Atego 1216, Atego 1518  
2008...

**OM 906 LA Euro4**

6 Sil. Dizel 6370cc  
175-210 KW  
(238-286 Ps) 17,4:1  
Atego 2124, Axor 1824K,  
Axor 2524CD, Axor 2529K,  
Axor 2529KL, Axor  
3029B, Axor 3029K,  
Axor 3229CD  
2008...



**Piston Ölçüleri**  
(Piston Dimensions)

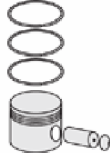
A : 64.400  
B - : 13.900  
BØ : 73.230  
D : 102.400  
E : 14.800

Pim: 42 x 80



**Piston Özellikleri**  
(Piston Features)

Segman Taşıyıcı  
(Ring Carrier)  
Sert Anotlama  
(Hard Anodizing)  
Yağ Püskürtme Oyuğu  
(Oil Jet Cut-out)  
Gözarası Düz  
(Flat Eye Gap)



**Piston Parça No**  
(Piston Part No)

87-877807-43  
87-72534-0501A  
0,30 mm Kısa (Short)

87-877800-43  
87-72534-STD1A  
0,30 mm Kısa (Short)

87-877800-42  
87-72534-STD1A

87-877807-42  
87-72534 0,50A

87-877811-43  
87-72534-1001  
-0,30 mm Kısa (Short)



**Segman Seti**  
(Ring Set)

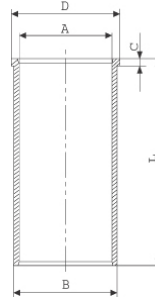
06-877800-30-STD  
06-877807-30 0,50

3.500  CK KV4  
2.500  F14  
4.000  CK GOE



**Silindir Gömleği**  
(Liner)

14-020320-10-D  
B : 106.020  
L : 220.000  
D : 109.500  
C : 6.000

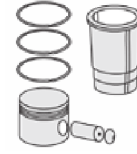


14-020321-10-D  
B : 106.500  
L : 220.000  
D : 110.000  
C : 6.500

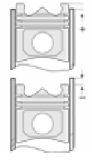
Dış Çap 0,50 mm Farklı  
(Outer Diameter  
0,50 mm Different)

14-020322-10-D  
B : 107.000  
L : 220.000  
D : 110.500  
C : 7.000

Dış Çap 1,00 mm Farklı  
(Outer Diameter  
1,00 mm Different)



**Silindir Kit**  
(Assembly Set)



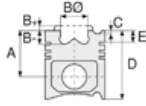
**Piston - Blok Montaj**  
Yüksekliği  
(Piston - Block  
Assembly Height)

+0,28/+0,50





**Motor Özellikleri**  
(Engine Specifications)



**Piston Ölçüleri**  
(Piston Dimensions)



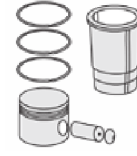
**Piston Parça No**  
(Piston Part No)



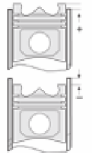
**Segman Seti**  
(Ring Set)



**Silindir Gömleği**  
(Liner)



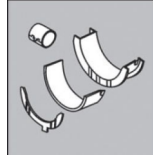
**Silindir Kit**  
(Assembly Set)



**Piston - Blok Montaj**  
**Yüksekliği**  
(Piston - Block  
Assembly Height)

**Ana Yatak**  
(Main Bearing)

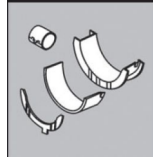
**Ana Yatak**  
(Main Bed)



72-3851 STD

72-4760 STD

**Eksantrik Yatak**  
(Camshaft Bearing)

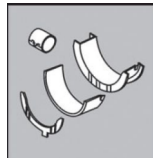


N 146/5 STD

54-4761 SEMİ (KEP)

54-4762 SEMİ (HALKA)

**Kol Yatak**  
(Connecting Rod Bearing)



71-3850 STD

71-4065 STD

**Silindir Kapak Conta**  
(Cylinder Head Gasket)



30-028733-20

