



Motor Özellikleri
(Engine Specifications)

İmalatçı (Manufacturer):
MERCEDES BENZ PKW
Çap (Diameter): Ø 88
FM Grup No: 5877

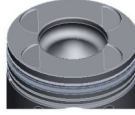
OM 646 986 C.Rail
Euro 4

4 Sil. Dizel 2150cc 65/80/
95/110 Kw(88/109/
129/150 Ps) Sprinter
209CDI, Sprinter
211CDI, Sprinter
213CDI, Sprinter
215CDI, Sprinter
309CDI, Sprinter
311CDI, Sprinter
313CDI, Sprinter
315CDI, Sprinter
411CDI, Sprinter
415CDI, Sprinter
509CDI, Sprinter
511CDI, Sprinter
515CDI
2007...

Piston Ölçüleri
(Piston Dimensions)

A : 42.400
B- : 14.100
BØ : 46.000
C1 : 2.030
C2 : 1.780
D : 72.300
E : 10.200

Pim : 30 x 70



Piston Özellikleri
(Piston Features)

Segman Taşıyıcı
(Ring Carrier)
Soğutma Kanallı
(Cooling Gallery)
Yağ Püskürtme Oyuğu
(Oil Jet Cut-Out)
Burçlu Piston
(Bushing Piston)
Gözarası Konik
(Conical Eye Gap)



Piston Parça No
(Piston Part No)

87-826507-23
87-72565-0501A
0,30 mm Kısa (Short)

87-826511-22
87-72565-100A

87-826500-23
87-72565-STD1A
0,30 mm Kısa (Short)

87-826500-22
87-72565-STD

87-826507-22
87-72565-0,50A



Segman Seti
(Ring Set)

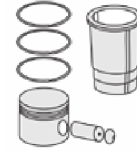
06-826500-90-STD
06-826507-90-0,50 mm
06-826511-90-1,00 mm

2.500 CK KV4
2.000 CR KV1
2.000 CR KV1

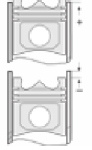
Goetze® LKZ-Ring®
Yağ Segmanı Matkap Delik
(Oil Ring Drill Hole)



Silindir Gömleği
(Liner)



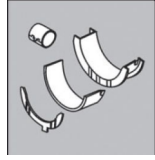
Silindir Kit
(Assembly Set)



Piston - Blok Montaj
Yüksekliği
(Piston - Block
Assembly Height)

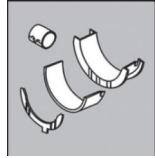
+0,38 / +0,62

Ana Yatak
(Main Bearing)



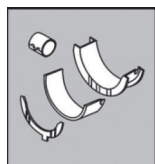
72-3856 STD

Kol Yatak
(Connecting Rod Bearing)



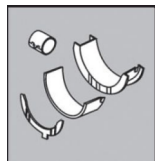
71-3876 STD

Ay Yatak
(Thrust Washer)



A129/4 STD

Kol Burcu
(Small End Bushing)



55-3898 SEMI

Silindir Kapak Conta
(Cylinder Head Gasket)



AH6450

AH6460

AH6470

