



IVECO LKW - Ø 145

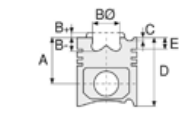
87-72895-STD



Motor Özellikleri
(Engine Specifications)

İmalatçı (Manufacturer):
IVECO LKW
Çap (Diameter): 145
FM Grup No: 4072

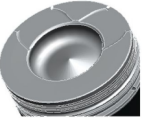
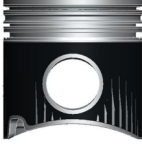
8280.42.350
8 Sil. Dizel 17174cc 375
KW (510 PS)
190, 240, 260, 400, 440
1989....



Piston Ölçüleri
(Piston Dimensions)

A : 95.300
B- : 23.800
BØ : 80.000
C1 : 0.800
D : 157.300
E : 9.200

Pim: 55 x 122



Piston Özellikleri
(Piston Features)

Segman Taşıyıcı
(Ring Carrier)
Soğutma Kanallı
(Coolin Gallery)
Yağ Püskürtme Oyuğu
(Oil Jet Cut-out)
Gözarası Düz
(Flat Eye Gap)



Piston Parça No
(Piston Part No)

87-782100-02
87-72895-STD



Segman Seti
(Ring Set)

06-782100-20-STD

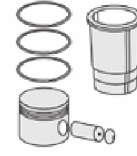
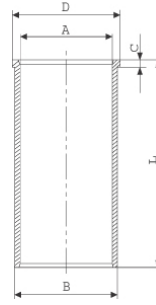
4.000 CR KV1
3.000 CR IKA
6.000 CR STD

Goetze® LKZ-Ring®



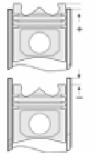
Silindir Gömleği
(Liner)

14-481110-00-WH
B : 158.500
L : 262.000
D : 174.000
C : 10.900
F : 0.850



Silindir Kit
(Assembly Set)

88-782100-02-STD
88-72895-STD



Piston - Blok Montaj
Yüksekliği
(Piston - Block
Assembly Height)





IVECO LKW - Ø 145

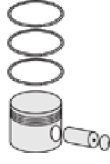
87-72895-STD



Motor Özellikleri
(Engine Specifications)



Piston Ölçüleri
(Piston Dimensions)



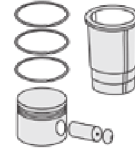
Piston Parça No
(Piston Part No)



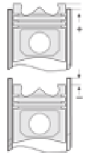
Segman Seti
(Ring Set)



Silindir Gömleği
(Liner)

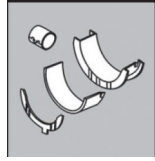


Silindir Kit
(Assembly Set)



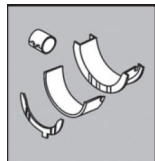
Piston - Blok Montaj
Yüksekliği
(Piston - Block
Assembly Height)

Ana Yatak
(Main Bearing)



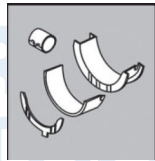
72-4548-STD

Kol Burcu
(Small End Bushing)



55-4507 SEMI

Kol Yatak
(Connecting Rod Bearing)



71-4108-STD



FEDERAL-MOGUL
POWERTRAIN

TÜRKİYE