



MAN - Ø 120

87-72954-STD



**Motor Özellikleri**  
(Engine Specifications)

İmalatçı (Manufacturer):  
MAN  
Çap (Diameter): Ø 120  
FM Grup No: 5507

**D2066 LOH 02**  
6 Sil. Dizel 10520cc  
165KW-360 PS  
18.360  
2006....

**Piston Ölçüleri**  
(Piston Dimensions)

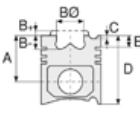
A : 76.800  
B- : 22.454  
BØ : 68.000  
C1 : 1.600  
C2 : 2.000  
D : 123.300  
E : 10.000

Pim: 52 x 96



**Piston Özellikleri**  
(Piston Features)

Segman Taşıyıcı  
(Ring Carrier)  
Soğutma Kanallı  
(Coolin Gallery)  
Burçlu Piston  
(Bushing Piston)



**Piston Parça No**  
(Piston Part No)

87-865000-02  
87-72954-STD



**Segman Seti**  
(Ring Set)

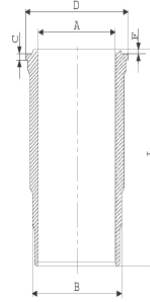
06-865000-00-STD

3.500 PVD ST  
2.500 NT ST  
3.500 NT ST

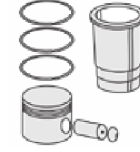


**Silindir Gömleği**  
(Liner)

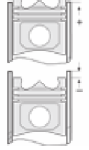
14-451550-00-WH  
B : 139.500  
L : 260.000  
D : 150.000  
C : 8.070



Kurum Giderme Ringli  
(With Soot Removal Ring)  
24-35043-60/O  
2X139,5\*3,95\*4,70 FPM

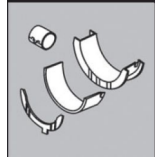


**Silindir Kit**  
(Assembly Set)



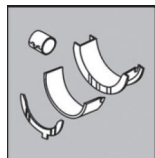
**Piston - Blok Montaj**  
Yüksekliği  
(Piston - Block  
Assembly Height)

**Ana Yatak**  
(Main Bearing)



H1239/7 STD

**Kol Yatak**  
(Connecting Rod Bearing)



71-4529 STD/ 71-4746 STD

**Silindir Kapak Conta**  
(Cylinder Head Gasket)



30-030576-00

