



MAN - Ø 126

87-72960-STD

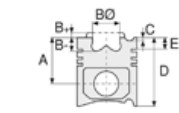


Motor Özellikleri
(Engine Specifications)

İmalatçı (Manufacturer):
MAN
Çap (Diameter): Ø 126
FM Grup No: 5487

D 2676 LFO5 Euro4
6 Sil. Dizel 12419cc
353 KW(480 Ps)
TGS 33.480
2009....

D 2676 LF14 Euro5
6 Sil. Dizel 12419cc
353 KW(480 Ps)
TGX 18.480
2009....



Piston Ölçüleri
(Piston Dimensions)

A : 76.250
B- : 20.100
BØ : 71.400
C1 : 2.000
D : 121.840
E : 12.600

Pim: 52 x 103



Piston Özellikleri
(Piston Features)

Segman Taşıyıcı
(Ring Carrier)
Soğutma Kanallı
(Coolin Gallery)
Yağ Püskürtme Oyuğu
(Oil Jet Cut-out)
Burçlu Piston
(Bushing Piston)
Gözarası Konik
(Conical Eye Gap)



Piston Parça No
(Piston Part No)

87-817700-02
87-72960-STD



Segman Seti
(Ring Set)

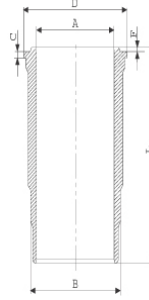
06-817700-20-STD
4.000 CK KV4
3.000 CR GOE
4.000 CR CR

Goetze® LKZ-Ring® /
Yağ Segmanı Matkap
Delikli (Oil Ring Drill
Perforated)

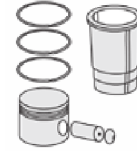


Silindir Gömleği
(Liner)

14-451040-00-WH
B : 139.500
L : 257.500
D : 150.000
C : 8.070

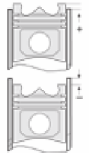


O-RING Bilgi (O-RING
Information)
24-35043-60/O
2x 139,5*3,95*4,70 FPM



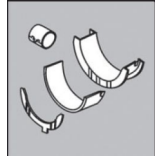
Silindir Kit
(Assembly Set)

89-817700-02-STD
89-72960-STD



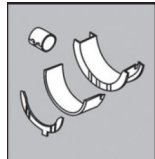
Piston - Blok Montaj
Yüksekliği
(Piston - Block
Assembly Height)

Ana Yatak
(Main Bearing)



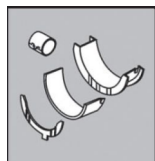
H1239/7 STD

Kol Yatak
(Connecting Rod Bearing)



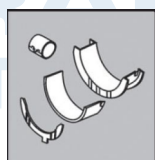
71-4529 STD

Ay Yatak
(Thrust Washer)



A159/4 STD

Kol Burcu
(Small End Bushing)



55-4563 SEMI

