



JOHN DEERE - Ø 98

87-73180-STD



Motor Özellikleri
(Engine Specifications)

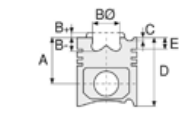
İmalatçı (Manufacturer):
John Deere
Çap (Diameter): 98
FM Grup No: 4236

3152, 3152D

3 Sil. Dizel
1020 TRK, 1030 TRK,
2020, 2510, 300, 300A,
350A, 350B, 380, 820
TRK
1972 - 1975

4202

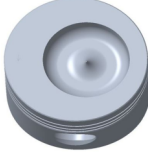
4 Sil. Dizel
400



Piston Ölçüleri
(Piston Dimensions)

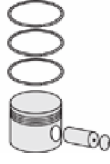
A : 57.500
B- : 16.500
BØ : 59.000
BX : 7.000
D : 99.300
E : 14.650

Pim: 30,162 x 81,4



Piston Özellikleri
(Piston Features)

Gözarası Düz
(Flat Eye Gap)



Piston Parça No
(Piston Part No)

87-856300-02
87-73180-STD



Segman Seti
(Ring Set)

06-856300-90-STD

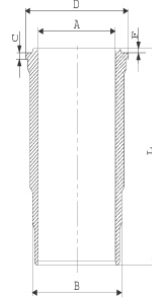
2.350 CKP GOE
2.380 P GOE
5.000 CRP STD



Silindir Gömleği
(Liner)

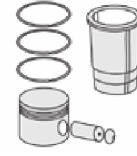
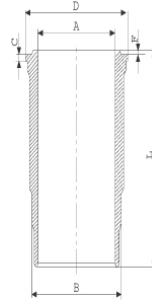
14-451150-00-WH

B : 107.600
L : 196.000
D : 123.000
C : 6.050
F : 0.750

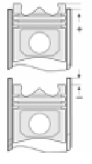


14-480600-00-WH

B : 107.600
L : 196.750
D : 123.000
C : 6.050
F : 0.750

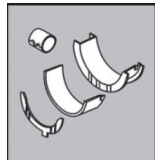


Silindir Kit
(Assembly Set)



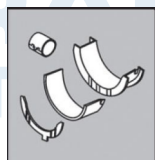
Piston - Blok Montaj
Yüksekliği
(Piston - Block
Assembly Height)

Ana Yatak
(Main Bearing)



H1234/7 STD

Kol Yatak
(Connecting Rod Bearing)



71-4498/6

