



DAF - Ø 130

87-75504-STD

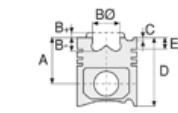


Motor Özellikleri
(Engine Specifications)

İmalatçı (Manufacturer):
DAF
Çap (Diameter): 130
FM Grup No: 2264

Paccar MX340S2
Euro 5

6 Sil. Dizel 12900cc
410/460 Hp
XF105, CF85, SAFIR,
SAFARI
2010...



Piston Ölçüleri
(Piston Dimensions)

A : 81.900
B- : 17.500
BØ : 91.000
C1 : 0.800
C2 : 2.000
D : 120.400
E : 16.000

Pim: 55 x 81,9



Piston Özellikleri
(Piston Features)

Soğutma Kanallı
(Coolin Gallery)
Gözarası Konik
(Conical Eye Gap)



Piston Parça No
(Piston Part No)

87-841600-22
87-75504-STD
Monosteel (Çelik Piston)



Segman Seti
(Ring Set)

06-841600-40-STD
4.000 CKS KVI
3.160 NT IKA
4.000 CKS GOE

Goetze® LKZ-Ring® /
Yağ segmanı matkap
delikli (Oil Ring Drill
Perforated)



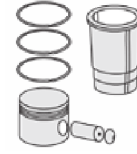
Silindir Gömleği
(Liner)

14-451230-20-WH
B : 146.000
L : 268.000
D : 157.600
C : 12.000
F : 0.950
R : 15.000

KURUM GİDERME
RİNGLİ (With Scraper
Rings)
/O-RING BİLGİ
(O-Ring Information) /
Euro 6 Malzemeli
(With Euro 6 Material)
24-35048-10/O
2x 146*157,4*5 EPDM
1x 146*157,4*5 FPM
1x139 EPDM

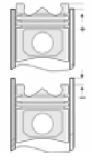
14-451230-20-WH
KURUM GİDERME
RİNGLİ (With Scraper
Rings) /O-RING BİLGİ/
(O-Ring Information) /
Euro 6 Malzemeli
(With Euro 6 Material)
24-35048-10/O
2x 146*157,4*5 EPDM
1x 146*157,4*5 FPM
1x139 EPDM

14-451231-20-WH
B : 146.000
L : 268.000
D : 157.600
C : 12.260
F : 0.950
R : 15.000



Silindir Kit
(Assembly Set)

89-841600-22-STD
89-75504-STD



Piston - Blok Montaj
Yüksekliği
(Piston - Block
Assembly Height)

0 / -0,20



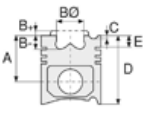


DAF - Ø 130

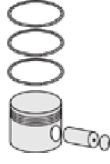
87-75504-STD



Motor Özellikleri
(Engine Specifications)



Piston Ölçüleri
(Piston Dimensions)



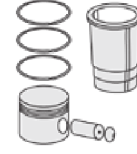
Piston Parça No
(Piston Part No)



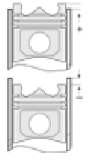
Segman Seti
(Ring Set)



Silindir Gömleği
(Liner)



Silindir Kit
(Assembly Set)



Piston - Blok Montaj
Yüksekliği
(Piston - Block
Assembly Height)

FLANŞ KALINLIĞI
(Flange Width)
0,25MM FARKLI
(0,25mm Different)/
Euro 6 Malzemeli
(With Euro 6 Material)

14-451232-20-WH
B : 146.000
L : 268.000
D : 157.600
C : 12.500
F : 0.950
R : 15.000

FLANŞ KALINLIĞI
(Flange Width)
0,50 MM FARKLI
(0,50mm Different) /
Euro 6 Malzemeli
(With Euro 6 Material)
24-35048-10/0

14-451233-20-WH
B : 146.000
L : 268.000
D : 158.100
C : 12.510
F : 0.950
R : 15.000

FLANŞ KALINLIĞI
(Flange Width)
+BOĞAZ ALT ÇAPI
(Centering Diameter
Under Flange)
+ FLANŞ ÇAPI (Flange
Diameter)
+0,50 FARKLI
(0,50mm Different)
/Euro 6 Malzemeli
(With Euro 6 Material)



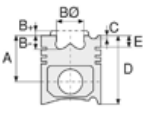


DAF - Ø 130

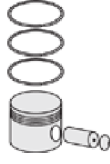
87-75504-STD



Motor Özellikleri
(Engine Specifications)



Piston Ölçüleri
(Piston Dimensions)



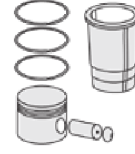
Piston Parça No
(Piston Part No)



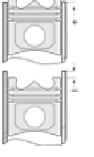
Segman Seti
(Ring Set)



Silindir Gömleği
(Liner)

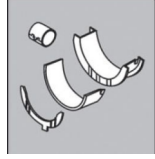


Silindir Kit
(Assembly Set)



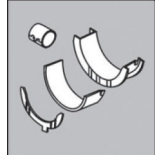
Piston - Blok Montaj
Yüksekliği
(Piston - Block
Assembly Height)

Ana Yatak
(Main Bed)



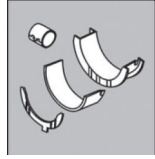
72-4788 STD

Ay Yatak
(Thrust Washer)



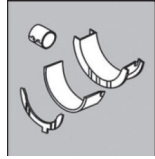
A293/4 STD

Kol Yatak
(Connecting Rod Bearing)



71-4787 STD

Eksantrik Yatak
(Camshaft Bearing)



N195/7 STD

Kol Burcu
(Small End Bushing)



55-4790 SEMI

