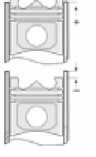
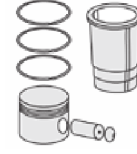
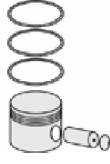
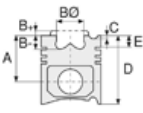




BMW - Ø 84

87-70272-STD



Motor Özellikleri
(Engine Specifications)

İmalatçı (Manufacturer):
BMW
Çap (Diameter): Ø 84
FM Grup No: 1461

N20 B20A
4 Sil. Benzinli 1997 cc
115 -180 KW / 156-245 PS
125İ-228İ-328İ-420İ-
528İ-sDrive20İ-X4-Z4
2011--->

Piston Ölçüleri
(Piston Dimensions)

A : 32.300
B- : 3.310
BØ : 52.500
B+ : 0.100
C1 : 3.700
C2 : 3.590
D : 51.100
E : 7.950

Pim : 22 x 52



Piston Özellikleri
(Piston Features)

Gözarası Konik
(Conical Eye Gap)

Piston Parça No
(Piston Part No)

87-70272-STD
87-817100-02
87-70272-050
87-817107-02

Segman Seti
(Ring Set)

06-817100-50-STD
1.200 NT ST
1.500 P F14
2.000 CR ST

Silindir Gömleği
(Liner)

Silindir Kit
(Assembly Set)

Piston - Blok Montaj
Yüksekliği
(Piston - Block
Assembly Height)

