

**Motor Özellikleri**  
(Engine Specifications)

**Piston Ölçüleri**  
(Piston Dimensions)

**Piston Parça No**  
(Piston Part No)

**Segman Seti**  
(Ring Set)

**Silindir Gömleği**  
(Liner)

**Silindir Kit**  
(Assembly Set)

**Piston - Blok Montaj**  
**Yüksekliği**  
(Piston - Block  
Assembly Height)

İmalatçı (Manufacturer):  
CATERPILLAR  
Çap (Diameter): Ø 120,65  
FM Grup No: 1707

A : 74.000  
B- : 19.900  
BØ : 85.100  
C1 : 2.100  
D : 130.000  
E : 19.700

87-152300-02  
87-70329-STD

06-152300-10-STD

3.120 CRP KV1  
3.120 CRP KV1  
3.150 CRP KV1

14-488330-00-WH  
B : 134.350  
L : 255.000  
D : 143.000  
C : 10.300  
F : 1.000

88-152300-02-STD  
88-70329-STD

- 0,45 / + 0,06

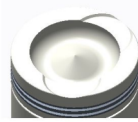
3306

6 Sil. Dizel  
140 G, 65V, 8N 3102, D7G

Pim: 43,18 x 94,8

3304

4 Sil. Dizel 7000cc  
49/97kW (62-130 PS) 17:1  
120 G



**Piston Özellikleri**  
(Piston Features)

Çift Segman Taşıyıcı  
(Double Ring Carrier)  
Gözarası Konik  
(Conical Eye Gap)

87-824700-02  
87-73577-STD

06-824700-00-STD

3.100 CKS KV4  
3.100 CKS KV1  
4.000 CR STD

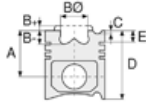
14-488330-00-WH

88-824700-02-STD  
88-73577-STD





**Motor Özellikleri**  
(Engine Specifications)



**Piston Ölçüleri**  
(Piston Dimensions)



**Piston Parça No**  
(Piston Part No)

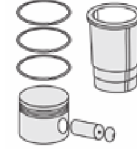


**Segman Seti**  
(Ring Set)



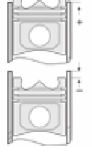
**Silindir Gömleği**  
(Liner)

14-480180-00-WH  
B: 134.450  
L: 255.000  
D: 144.750  
C: 11.300  
F: 1.000

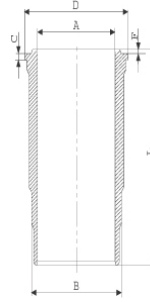


**Silindir Kit**  
(Assembly Set)

14-488320-00-WH  
B: 137.500  
L: 255.000  
D: 146.000  
C: 14.600  
F: 1.000



**Piston - Blok Montaj**  
**Yüksekliği**  
(Piston - Block  
Assembly Height)



**Dış Çap Yarı Mamül**  
(Outer Diameter  
Semi-Finished)

14-488620-00-WH  
B: 134.450  
L: 265.000  
D: 144.750  
C: 11.300  
F: 1.00

