



ISUZU - Ø 95.4

87-71221-STD

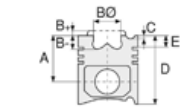


**Motor Özellikleri**  
(Engine Specifications)

İmalatçı (Manufacturer):  
ISUZU  
Çap (Diameter): Ø 95,4  
FM Grup No: 3928

**4JJ1 Euro 5**  
4 Sil. Dizel 2999cc 88-130  
kw / 120-177 PS 17,5

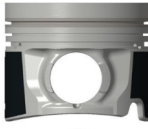
HİDROMEK, NLR-NPR-  
NMR- SERİSİ  
2008...



**Piston Ölçüleri**  
(Piston Dimensions)

A : 49.750  
BØ : 55.300  
D : 78.450  
E : 12.200

Pim : 34 x 78



**Piston Özellikleri**  
(Piston Features)

Segman Taşıyıcı  
(Ring Carrier)  
Soğutma Kanallı  
(Coolin Gallery)  
Yağ Püskürtme Oyuğu  
(Oil Jet Cut-out)  
Gözarası Konik  
(Conical Eye Gap)



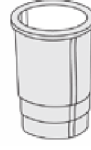
**Piston Parça No**  
(Piston Part No)

87-852700-02  
87-71221-STD

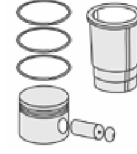


**Segman Seti**  
(Ring Set)

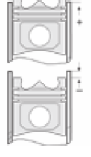
06-852700-00-STD  
2.000 CR SR  
1.500 P STD  
3.000 NT ST



**Silindir Gömleği**  
(Liner)



**Silindir Kit**  
(Assembly Set)



**Piston - Blok Montaj**  
Yüksekliği  
(Piston - Block  
Assembly Height)

