



MITSUBISHI - Ø 91,1

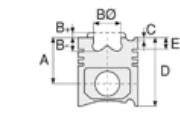
87-73415-STD



Motor Özellikleri
(Engine Specifications)

İmalatçı (Manufacturer):
MITSUBISHI
Çap (Diameter): Ø 91,1
FM Grup No: 6034

4D56 TDI EURO V
4 Sil. Dizel 136 HP L 200
2014...



Piston Ölçüleri
(Piston Dimensions)

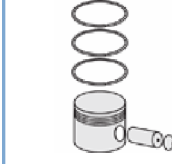
A : 48.150
B - : 16.750
BØ : 46.900
C1 : 2.000
C2 : 2.500
D : 78.150
E : 12.500

Pim : 32 x 75



Piston Özellikleri
(Piston Features)

Segman Taşıyıcı
(Ring Carrier)
Sert Anotlama
(Hard Anodizing)
Soğutma Kanallı
(Cooling Gallery)
Yağ Püskürtme Oyuğu
(Oil Jet Cut-Out)
Gözarası Konik
(Conical Eye Gap)



Piston Parça No
(Piston Part No)

87-878400-02
87-73415-STD
2. ve 4. Silindir İçin
(For Cylinder)
87-878407-02
87-73415 0,50
87-878400-12
87-73416-STD
1. ve 3. Silindir İçin
(For Cylinder)
87-878407-12
87-73416 0,50

87-878400-03
87-70415-STD1
0,20 Kısa (Short)
87-878400-13
87-70416-STD1
0,20 Kısa (Short)
87-878407-03
87-70415-0501
0,20 Kısa (Short)
87-878407-13
87-70416-0501
0,20 Kısa (Short)

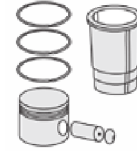


Segman Seti
(Ring Set)

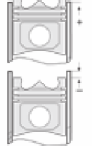
06-878400-00-STD
06-878407-00-0,50 mm
2.600 PVD ST
2.060 CR KV1
3.000 NT ST



Silindir Gömleği
(Liner)



Silindir Kit
(Assembly Set)



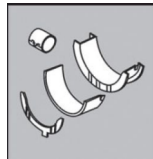
Piston - Blok Montaj
Yüksekliği
(Piston - Block
Assembly Height)

ANA YATAK
(MAIN BEARING)



H1248/5 STD

KOL YATAK
(ARM BED)



71-4194/4 STD

SİL. KAPAK. CONTA
(CYLINDER HEAD GASKET)



BS130

