

**Motor Özellikleri**  
(Engine Specifications)

İmalatçı (Manufacturer):  
CATERPILLAR  
Çap (Diameter): Ø 120,65  
FM Grup No: 1707

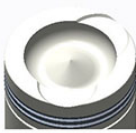
**3306**  
6 Sil. Dizel  
140 G, 65V, 8N 3102, D7G

**3304**  
4 Sil. Dizel 7000cc  
49/97kW (62-130 PS) 17:1  
120 G

**Piston Ölçüleri**  
(Piston Dimensions)

A : 74.000  
B- : 19.900  
BØ : 85.100  
C1 : 2.100  
D : 130.000  
E : 19.700

Pim: 43,18 x 94,8



**Piston Özellikleri**  
(Piston Features)

Çift Segman Taşıyıcı  
(Double Ring Carrier)  
Gözarası Konik  
(Conical Eye Gap)

**Piston Parça No**  
(Piston Part No)

87-152300-02  
87-70329-STD

**Segman Seti**  
(Ring Set)

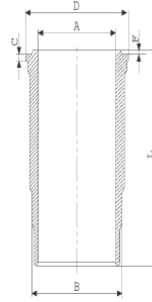
06-152300-10-STD

3.120 CRP KV1  
3.120 CRP KV1  
3.150 CRP KV1

**Silindir Gömleği**  
(Liner)

14-488330-00-WH

B : 134.350  
L : 255.000  
D : 143.000  
C : 10.300  
F : 1.000



**Silindir Kit**  
(Assembly Set)

88-152300-02-STD  
88-70329-STD

**Piston - Blok Montaj**  
Yüksekliği  
(Piston - Block  
Assembly Height)

- 0,45 / + 0,06

06-152300-10-STD

3.120 CRP KV1  
3.120 CRP KV1  
3.150 CRP KV1

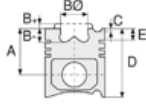
14-488330-00-WH

88-824700-02-STD  
88-73577-STD

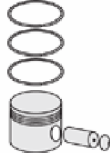




**Motor Özellikleri**  
(Engine Specifications)



**Piston Ölçüleri**  
(Piston Dimensions)



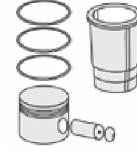
**Piston Parça No**  
(Piston Part No)



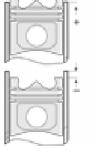
**Segman Seti**  
(Ring Set)



**Silindir Gömleği**  
(Liner)



**Silindir Kit**  
(Assembly Set)



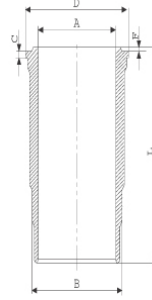
**Piston - Blok Montaj**  
**Yüksekliği**  
(Piston - Block  
Assembly Height)

14-480180-00-WH

B : 134.450  
L : 255.000  
D : 144.750  
C : 11.300  
F : 1.000

14-488320-00-WH

B : 137.500  
L : 255.000  
D : 146.000  
C : 14.600  
F : 1.000



**Dış Çap Yarı Mamül**  
(Outer Diameter  
Semi-Finished)

14-488620-00-WH

B : 134.450  
L : 265.000  
D : 144.750  
C : 11.300  
F : 1.00

