



FIAT - Ø 79,5

87-72620-STD

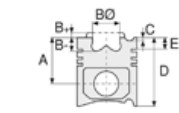


Motor Özellikleri
(Engine Specifications)

İmalatçı (Manufacturer):
FIAT
Çap (Diameter): Ø 79,5
FM Grup No: 2865

1.6 16V MULTIJET
(EURO 5)

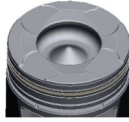
4 Sil. Dizel 1598cc
74 KW-100 PS 16:5
BRAVO 1.6 16v,
COMBO 1.6 16V,
DOBLO II 1.6 16V,
LINEA 1.6 16V
2010....



Piston Ölçüleri
(Piston Dimensions)

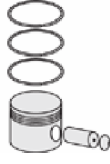
A : 43.950
B- : 13.800
BØ : 41.700
C1 : 0.460
C2 : 0.600
D : 68.950
E : 7.500

Pim: 26 x 62,8



Piston Özellikleri
(Piston Features)

Segman Taşıyıcı
(Ring Carrier)
Yağ Püskürtme Oyuğu
(Oil Jet Cut-out)
Gözarası Konik
(Conical Eye Gap)



Piston Parça No
(Piston Part No)

87-844500-02
87-72620-STD

87-844506-02
87-72620 0,40



Segman Seti
(Ring Set)

06-844500-00-STD
06-844506-00 0,40 mm

1.500 CKP KV4
1.500 P F14
2.000 CRP GOE

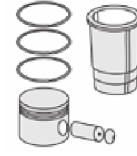
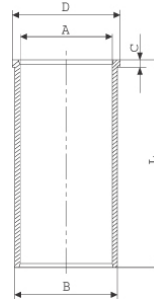
Yağ segmanı Matkap
Delikli - Goetze®
LKZ-Ring® (Oil Ring Drill
Hole - Goetze®
LKZ-Ring®)



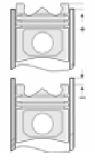
Silindir Gömleği
(Liner)

14-022300-00-D

B : 82.500
L : 142.000
D : 84.000
C : 5.000



Silindir Kit
(Assembly Set)



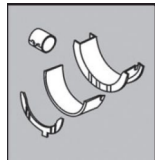
Piston - Blok Montaj
Yüksekliği
(Piston - Block
Assembly Height)

Deliksiz Conta ile
(With No Hole Gasket)
(0,82mm)
+0,02/+0,10 mm

Tek Delik Conta ile
(With Single Hole Gasket)
(0,92 mm)
+0,10/+0,20mm

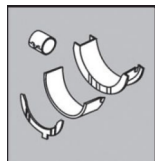
İki Delikli Conta ile
(With Single Hole Gasket)
+0,20 / +0,30 mm

Ana Yatak
(Main Bearing)



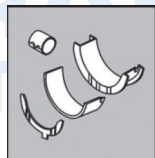
H1293/5 STD

Kol Burcu
(Small End Bushing)



55-4779 SEMI

Ay Yatak
(Thrust Washer)



A291/2 STD

