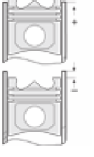
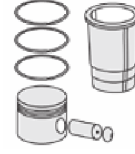
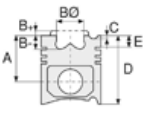




FORD - Ø 115

87-72748-STD



**Motor Özellikleri**  
(Engine Specifications)

**Piston Ölçüleri**  
(Piston Dimensions)

**Piston Parça No**  
(Piston Part No)

**Segman Seti**  
(Ring Set)

**Silindir Gömleği**  
(Liner)

**Silindir Kit**  
(Assembly Set)

**Piston - Blok Montaj**  
Yüksekliği  
(Piston - Block  
Assembly Height)

İmalatçı (Manufacturer):  
FORD  
Çap (Diameter): Ø 115  
FM Grup No: 6683

A : 71.000  
B - : 18.700  
BØ : 82.000  
C1 : 1.300  
D : 116.800  
E : 10.000

87-72748-STD  
87-842800-42

06-842800-00-STD  
06-842807-00 0,50 mm  
06-842811-00 1,00 mm

3.000 CKP KV4  
2.500 P F14  
3.000 CRP GOE13  
Goetze® LKZ-Ring®

**NHDD 9.0L Euro 6**  
6 Sil. Dizel 8974 cc  
330 PS 243 kW  
1833-2533-2633-3233  
2018---->

Pim : 48 x 91,5



**Piston Özellikleri**  
(Piston Features)

Gözarası Konik  
(Conical Eye Gap)  
Segman Taşıyıcı  
(Ring Carrier)  
Soğutma Kanallı  
(Coolin Gallery)  
Yağ Püskürtme Oyuğu  
(Oil Jet Cut-out)

