



Motor Özellikleri
(Engine Specifications)

İmalatçı (Manufacturer):
SAAB SCANIA
Çap (Diameter): Ø 127
FM Grup No: 7573

DSC 12.02 Euro2

6 Sil. Dizel 11716cc
265 Kw(360 Ps) 18:1
K124, P124, R124, T124
1995....

DC 12.02.Euro 3

6 Sil. Dizel 11716cc
204-309 kw/400-420
PS 18:1
124K
2000....

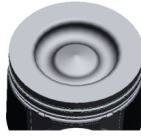
DC 16.02. Euro 3

6 Sil. Dizel 15600cc
353KW-480 PS 18:1
164R-164T
2000....

Piston Ölçüleri
(Piston Dimensions)

A : 85.040
B- : 22.150
BØ : 78.000
D : 129.040
E : 14.100

Pim: 54 x 106



Piston Özellikleri
(Piston Features)

Segman Taşıyıcı
(Ring Carrier)
Yağ Püskürtme Oyuğu
(Oil Jet Cut-out)
Gözarası Konik
(Conical Eye Gap)



Piston Parça No
(Piston Part No)

87-892350-22
87-73736-STD A



Segman Seti
(Ring Set)

06-892350-20-STD

3.500 CK KV1
2.385 GOE
4.747 CR STD

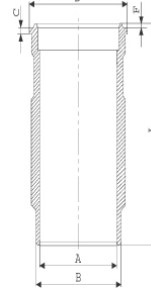
Yağ Segmanı Matkap
Delik / Goetze®
LKZ-Ring® (Oil Ring Drill
Hole / Goetze®
LKZ-Ring®)



Silindir Gömleği
(Liner)

14-579940-00-WH

B : 139.000
L : 271.120
D : 150.000
C : 194.270
F : 0.850
R : 8.250



O-Ring Bilgi
(O-RING Information)
24-35042-60/O
1x 138*144.75 *4.6 FPM
1x 148*4 FPM

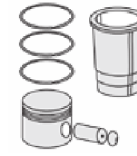
14-570100-00-WH

B : 139.000
L : 271.120
D : 150.000
C : 194.270
R : 12.000

Kurum Giderme Ringli
/ O-Ring Bilgi (With
Soot Removal Ring /
O-RING Information)
24-35042-60/O
1X142,47*3,53 EPDM

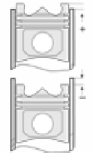
14-570101-00-WH

B : 139.000
L : 270.120
D : 150.500
C : 194.270
F : 0.850
R : 12.000



Silindir Kit
(Assembly Set)

89-892350-22-STD
89-73736-STD A



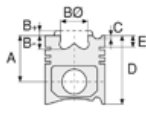
Piston - Blok Montaj
Yüksekliği
(Piston - Block
Assembly Height)

0/+0,25





Motor Özellikleri
(Engine Specifications)



Piston Ölçüleri
(Piston Dimensions)



Piston Parça No
(Piston Part No)



Segman Seti
(Ring Set)



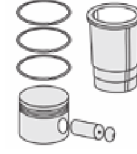
Silindir Gömleği
(Liner)

Flanş Çapı +0,50 Farklı
Çalışması (Flange
Diameter +0,50
Different Study)

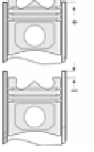
14-570102-00-WH

B : 139.000
L : 271.120
D : 151.000
C : 194.270
F : 0.850
R : 12.000

Flanş Çapı +1,00 Farklı
Çalışması (Flange
Diameter +1,00
Different Study)



Silindir Kit
(Assembly Set)

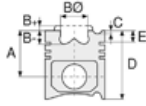


Piston - Blok Montaj
Yüksekliği
(Piston - Block
Assembly Height)





Motor Özellikleri
(Engine Specifications)



Piston Ölçüleri
(Piston Dimensions)



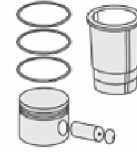
Piston Parça No
(Piston Part No)



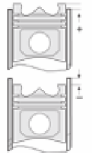
Segman Seti
(Ring Set)



Silindir Gömleği
(Liner)

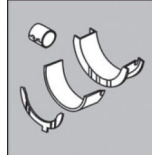


Silindir Kit
(Assembly Set)



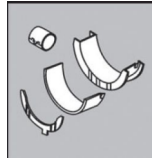
Piston - Blok Montaj
Yüksekliği
(Piston - Block
Assembly Height)

Ana Yatak
(Main Bearing)



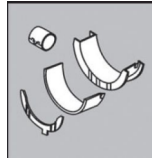
H1103/7 STD

Kol Yatak
(Connecting Rod Bearing)



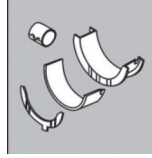
71-4860 STD

Eksantrik Yatak
(Camshaft Bearing)



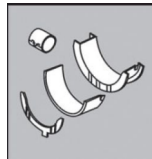
N173/7 STD

Ay Yatak
(Thrust Washer)



A232/4 STD

Kol Burcu
(Small End Bushing)



55-4544 SEMI

Silindir Kapak Conta
(Cylinder Head Gasket)



AH6550

