



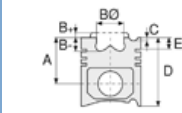
**Motor Özellikleri**  
(Engine Specifications)

İmalatçı (Manufacturer):  
SAAB SCANIA  
Çap (Diameter): Ø 127  
FM Grup No: 7516

**DSC 12.01 EURO2**  
6 Sil. Dizel 11700cc  
265/325 Kw (360/442 PS)  
18:1  
Turbocharged  
Intercooled 24 Valve  
R 164, R124 LA 400  
1996....

**DSC 12.02 EURO3**  
6 Sil. Dizel 11700cc  
265/325 Kw (360/442 PS)  
18:1  
Turbocharged  
Intercooled 24 Valve  
R124 LA 400, R164  
1996....

**DSC 16.02 EURO3 V8**  
8 Sil. Dizel 15600cc  
353/426 Kw (480/579 PS)  
18:1  
Turbocharged  
Intercooled 32 Valve  
R 164, R124 LA 400  
1998 - 2002



**Piston Ölçüleri**  
(Piston Dimensions)

A : 85.210  
B- : 22.150  
BØ : 78.000  
D : 122.710  
E : 14.020

Pim: 54 x 106



**Piston Özellikleri**  
(Piston Features)

Yağ Püskürtme Oyuğu  
(Oil Jet Cut-out)  
Gözarası Konik  
(Conical Eye Gap)






**Piston Parça No**  
(Piston Part No)

87-892350-02  
87-75002-STD  
Çift Parçalı Piston  
(Two Piece Piston)



**Segman Seti**  
(Ring Set)

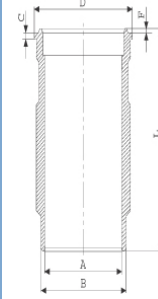
06-892350-20-STD  
3.500  CK KV1  
2.385  GOE  
3.500  CR STD

Yağ Segmanı Matkap  
Delikli / Goetze®  
LKZ-Ring® (Oil Ring Drill  
Perforated / Goetze®  
LKZ-Ring®)

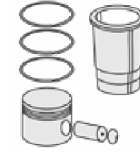


**Silindir Gömleği**  
(Liner)

14-579940-00-WH  
B : 139.000  
L : 271.120  
D : 150.000  
C : 194.270  
F : 0.850  
R : 8.250

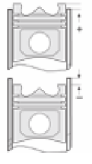


O-Ring Bilgi  
(O-RING Information)  
24-35042-60/O  
1x 138\*144.75\*4.6 FPM  
1x 148\*4 FPM



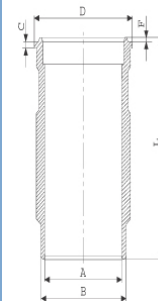
**Silindir Kit**  
(Assembly Set)

89-892350-02-STD  
89-75002-STD



**Piston - Blok Montaj**  
Yüksekliği  
(Piston - Block  
Assembly Height)

14-570030-00-WH  
B : 140.000  
L : 271.120  
D : 151.000  
C : 194.270  
F : 0.850  
R : 8.250



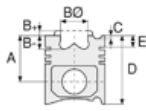
O-Ring Bilgi  
(O-RING Information)  
24-35042-60/O  
1x 147,5\*4 EPDM PEROX  
1x 138\*144,75\*4,6 FPM

89-892350-12-STD  
89-75002-STDB

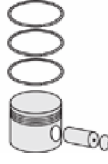




**Motor Özellikleri**  
(Engine Specifications)



**Piston Ölçüleri**  
(Piston Dimensions)



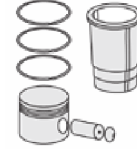
**Piston Parça No**  
(Piston Part No)



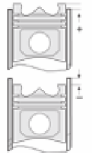
**Segman Seti**  
(Ring Set)



**Silindir Gömleği**  
(Liner)



**Silindir Kit**  
(Assembly Set)



**Piston - Blok Montaj**  
**Yüksekliği**  
(Piston - Block  
Assembly Height)

89-892350-52-STD  
89-75002-STDH

15-570080-00-WH  
B : 139.000  
L : 271.120  
D : 151.000  
C : 194.270  
F : 0.850  
R : 8.250

O-Ring Bilgi  
(O-Ring Infotmation)  
24-35050-30/O  
1x 138\*144,75\*4,6 FPM  
1x 148\*4 FPM

89-892350-14-STD  
89-75002-STDH

87-892350-03  
87-75002-STD1  
0,20 mm Kısa (Short)

87-892300-02  
87-75002-STDH

06-892300-20-STD

3.500  CK KV1  
2.385  P F14  
3.500  CR STD

Goetze® LKZ-Ring® /  
Yağ Segmanı Matkap  
Delikli (Goetze® LKZ-Ring®  
/ Oil Ring Drill  
Perforated)

87-892600-32  
87-75002-STDJ

06-892600-20-STD

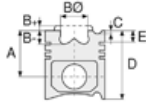
3.500  CK KV1  
2.385  CRP F14  
3.500  CK GOE

Goetze® LKZ-Ring® /  
Yağ Segmanı Matkap  
Delikli (Goetze® LKZ-Ring®  
/ Oil Ring Drill  
Perforated)





**Motor Özellikleri**  
(Engine Specifications)



**Piston Ölçüleri**  
(Piston Dimensions)



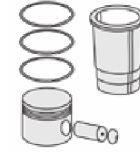
**Piston Parça No**  
(Piston Part No)



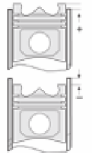
**Segman Seti**  
(Ring Set)



**Silindir Gömleği**  
(Liner)



**Silindir Kit**  
(Assembly Set)



**Piston - Blok Montaj**  
**Yüksekliği**  
(Piston - Block  
Assembly Height)

14-570030-00-WH

O-Ring Bilgi  
(O-Ring Information)  
24-35042-60/O

1x 147,5\*4 EPDM PEROX  
1x 138\*144,75\*4,6 FPM

14-570031-00-WH

B : 140.000  
L : 271.120  
D : 151.500  
C : 194.270  
F : 0.850  
R : 8.250

Flanş Çapı +0,50 Farklı  
Çalışması (Flange  
Diameter +0,50  
Different Study)

14-570032-00-WH

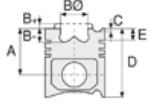
B : 140.000  
L : 271.120  
D : 152.000  
C : 194.270  
F : 0.850  
R : 8.250

Flanş Çapı +1,00 Farklı  
Çalışması (Flange  
Diameter +1,00  
Different Study)

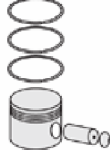




**Motor Özellikleri**  
(Engine Specifications)



**Piston Ölçüleri**  
(Piston Dimensions)



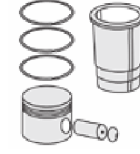
**Piston Parça No**  
(Piston Part No)



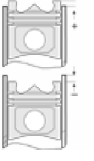
**Segman Seti**  
(Ring Set)



**Silindir Gömleği**  
(Liner)



**Silindir Kit**  
(Assembly Set)



**Piston - Blok Montaj**  
**Yüksekliği**  
(Piston - Block  
Assembly Height)

14-570101-00-WH  
B : 139.000  
L : 270.120  
D : 150.500  
C : 194.270  
F : 0.850  
R : 12.000

Flanş Çapı +0,50 Farklı  
Çalışması (Flange  
Diameter +0,50  
Different Study)

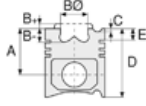
14-570102-00-WH  
B : 139.000  
L : 271.120  
D : 151.000  
C : 194.270  
F : 0.850  
R : 12.000

Flanş Çapı +1,00 Farklı  
Çalışması (Flange  
Diameter +1,00  
Different Study)

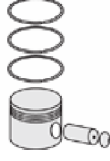




**Motor Özellikleri**  
(Engine Specifications)



**Piston Ölçüleri**  
(Piston Dimensions)



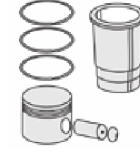
**Piston Parça No**  
(Piston Part No)



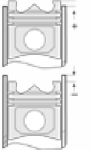
**Segman Seti**  
(Ring Set)



**Silindir Gömleği**  
(Liner)

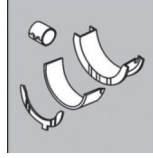


**Silindir Kit**  
(Assembly Set)



**Piston - Blok Montaj**  
**Yüksekliği**  
(Piston - Block  
Assembly Height)

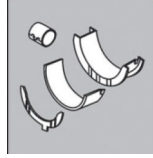
**Ana Yatak**  
(Main Bed)



H1103/7 STD

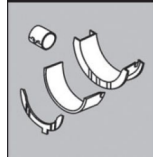
72-4072 STD

**Kol Yatak**  
(Connecting Rod Bearing)



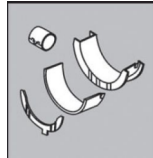
71-4860 STD

**Ay Yatak**  
(Thrust Washer)



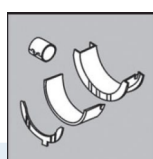
A232/4 STD

**Eksantrik Yatak**  
(Camshaft Bearing)



N173/7 STD

**Kol Burcu**  
(Small End Bushing)



55-4544 SEMI

**Sil. Kapak. Conta**  
(Cylinder Head Gasket)



AH6550

