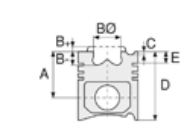




**Motor Özellikleri**  
(Engine Specifications)

İmalatçı (Manufacturer):  
FORD PKW  
Çap (Diameter): Ø 104,77  
FM Grup No: 3047

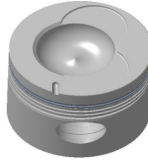
**363 DOVER II**  
6 Sil. Dizel 5950cc  
81 Kw (110 PS) 16:1  
CARGO 0711,  
CARGO 0811,  
CARGO 0911,  
OTOSAN İMALATI  
D1211 KAMYONLAR  
1981....



**Piston Ölçüleri**  
(Piston Dimensions)

A : 71.250  
B- : 23.000  
BØ : 57.500  
BX : 3.700  
C1 : 2.300  
D : 119.900  
E : 20.000

Pim: 36,505 x 86,2



**Piston Özellikleri**  
(Piston Features)

Segman Taşıyıcı  
(Ring Carrier)  
Çelik Plaka  
(Steel Strut)  
Gözarası Düz  
(Flat Eye Gap)



**Piston Parça No**  
(Piston Part No)

87-838200-02  
87-70842-STD A  
87-838206-02  
87-70842 015 A  
87-838210-02  
87-70842 035 A

87-835300-02  
87-70842-STD B

87-835306-02  
87-70842 015 B

87-835310-02  
87-70842 035 B



**Segman Seti**  
(Ring Set)

06-838200-10-STD  
06-838206-10 0,015  
06-838210-10 0,035 "

2.385 CRP KV1  
2.385 P STD  
4.747 CRP STD

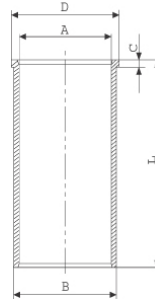
06-835300-10-STD  
06-835306-10 0,015  
06-835310-10 0,035 "

2.385 CRP KV1  
2.385 P STD  
4.747 CRP STD



**Silindir Gömleği**  
(Liner)

14-025810-00-D  
B : 108.950  
L : 218.500  
D : 110.000  
C : 7.000



14-025811-00-D  
B : 109.450  
L : 218.500  
D : 110.500  
C : 7.000

Dış Çap 0,50mm Farklı  
(Outside Diameter  
0,50 mm Different)

14-025812-00 D  
B : 109.950  
L : 218.500  
D : 111.000  
C : 7.000

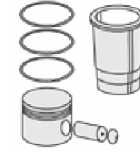
Dış Çap 1,00mm Farklı  
(Outside Diameter  
0,50 mm Different)

14-025813-00-D  
B : 110.450  
L : 218.500  
D : 111.500  
C : 7.000

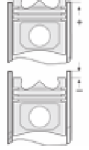
Dış Çap 1,50mm Farklı  
(Outside Diameter  
1,50 mm Different)

14-025814-00-D  
B : 110.950  
L : 218.500  
D : 112.000  
C : 7.000

Dış Çap 2,00mm Farklı  
(Outside Diameter  
2,00 mm Different)



**Silindir Kit**  
(Assembly Set)



**Piston - Blok Montaj**  
Yüksekliği  
(Piston - Block  
Assembly Height)

+ 0,380 / + 0,152

