

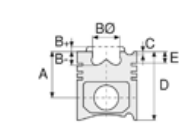


Motor Özellikleri
(Engine Specifications)

İmalatçı (Manufacturer):
FORD LKW
Çap (Diameter): Ø 107,21
FM Grup No: 3060

2712 E
4 Sil. Dizel 4161cc
55 Kw (75 PS) 16,5:1
1969 - 1981

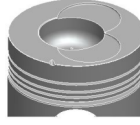
2715 E
6 Sil. Dizel 6224cc
84 Kw (114 PS) 16,5:1
6500, 7095, D 0610,
D 0911, D 1011, D 1111,
D 1211, D 300, D 400,
D 500, D 550, D 600,
D 607, D 700, D 707,
D 750, D 900, DT 800
YUKLEYICI
1969 - 1975



Piston Ölçüleri
(Piston Dimensions)

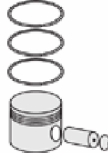
A : 71.200
B- : 27.770
BØ : 51.560
BX : 3.800
C1 : 1.700
D : 119.890
E : 20.070

Pim: 36,512 x 90



Piston Özellikleri
(Piston Features)

Gözarası Düz
(Flat Eye Gap)



Piston Parça No
(Piston Part No)

87-214800-22
87-70871-STD
87-214807-22
87-70871 020
87-214811-22
87-70871 040



Segman Seti
(Ring Set)

06-214800-10-STD
06-214807-10 0,020
06-214811-10 0,040 "

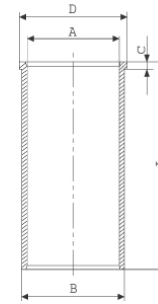
2.385 CRP KVI
2.385 P STD
2.385 P STD
4.747 CRP STD

Goetze® LKZ-Ring®



Silindir Gömleği
(Liner)

14-025840-00-D
B : 112.000
L : 213.000
D : 113.000
C : 6.000

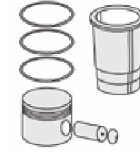


14-025841-00-D
B : 112.500
L : 213.000
D : 113.500
C : 6.000

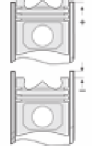
Dış Çap 0,50mm Farklı
(Outside Diameter
1,00 mm Different)

14-025842-00-D
B : 113.000
L : 213.000
D : 114.000
C : 6.000

Dış Çap 1,00mm Farklı
(Outside Diameter
1,00 mm Different)



Silindir Kit
(Assembly Set)



Piston - Blok Montaj
Yüksekliği
(Piston - Block
Assembly Height)

- 0,15 / + 0,40

