



FORD LKW - Ø 107,21

87-70879-STD



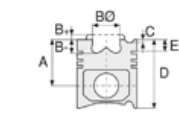
Motor Özellikleri
(Engine Specifications)

İmalatçı (Manufacturer):
FORD LKW
Çap (Diameter): Ø 107,21
FM Grup No: 3059

254 CID
4 Sil. Dizel 4160cc
66 Kw (90 PS) 16:1

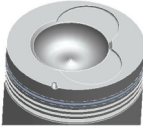
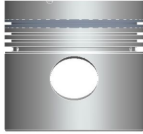
380 CID
6 Sil. Dizel 6221cc
89 Kw (121 PS) 16:1
D 0712, D 0812, D 0813,
D 0912, D 1013
1981....

DOVER
6 Sil. Dizel 6224cc
96 Kw (128 PS) 16:1
DSMZ, KAMYON 2014,
KAMYON 2514,
OTOBUS 131.11.8



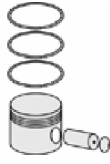
Piston Ölçüleri
(Piston Dimensions)

A : 71.250
B - : 23.300
BØ : 58.700
BX : 3.700
C1 : 2.300
D : 119.900
E : 19.700
Pim: 36,505 x 86,2



Piston Özellikleri
(Piston Features)

Segman Taşıyıcı
(Ring Carrier)
Çelik Plaka
(Steel Strut)
Gözarası Düz
(Flat Eye Gap)



Piston Parça No
(Piston Part No)

87-214800-02
87-70879-STD
87-214807-02
87-70879 0,20
87-214811-02
87-70879 0,40



Segman Seti
(Ring Set)

06-214800-10-STD
06-214807-10 0,020
06-214811-10 0,040 "

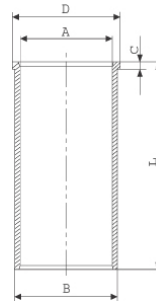
2.385 CRP KVI
2.385 P STD
2.385 P STD
4.747 CRP STD

Goetze® LKZ-Ring®



Silindir Gömleği
(Liner)

14-025840-00-D
B : 112.000
L : 213.000
D : 113.000
C : 6.000

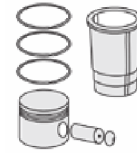


14-025841-00-D
B : 112.500
L : 213.000
D : 113.500
C : 6.000

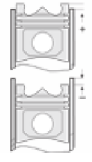
Dış Çap 0,50mm Farklı
(Outside Diameter
1,00 mm different)

14-025842-00-D
B : 113.000
L : 213.000
D : 114.000
C : 6.000

Dış Çap 1,00mm Farklı
(Outside Diameter
1,00 mm different)



Silindir Kit
(Assembly Set)



Piston - Blok Montaj
Yüksekliği
(Piston - Block
Assembly Height)

+ 0,152 / + 0,380

