



Motor Özellikleri
(Engine Specifications)

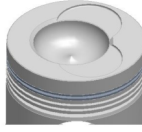
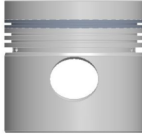
İmalatçı (Manufacturer):
FORD LKW
Çap (Diameter): Ø 104,77
FM Grup No: 3048

363 DOVER II
6 Sil. Dizel 5950cc
81 Kw (110 PS) 16:1
CARGO 0711,
CARGO 0811,
CARGO 0911,
OTOSAN İMALATI
D1211 KAMYONLAR
1981....



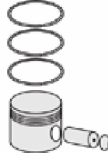
Piston Ölçüleri
(Piston Dimensions)

A : 71.250
B- : 23.000
BØ : 57.500
BX : 3.700
C1 : 2.300
D : 119.900
E : 20.000
Pim: 36,505 x 86,2



Piston Özellikleri
(Piston Features)

Segman Taşıyıcı
(Ring Carrier)
Çelik Plaka
(Steel Strut)
Gözarası Düz
(Flat Eye Gap)



Piston Parça No
(Piston Part No)

87-835500-42
87-70880-STD A
87-835506-42
87-70880 015A
87-835510-42
87-70880 035A

87-838100-42
87-70880-STD B
87-838106-42
87-70880 015B

87-838110-42
87-70880 035B



Segman Seti
(Ring Set)

06-835500-10-STD
06-835506-10 0,015
06-835510-10 0,035"

2.385 CRP KV1
2.385 CR STD
2.385 P STD
4.747 CRP STD

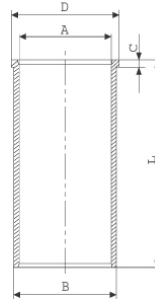
06-838100-10-STD
06-838106-10 0,015
06-838110-10 0,035"

2.385 CRP KV1
2.385 CRP STD
2.385 P STD
4.747 CRP STD



Silindir Gömleği
(Liner)

14-025810-00-D
B : 108.950
L : 218.500
D : 110.000
C : 7.000

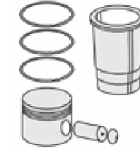


14-025811-00-D
B : 109.450
L : 218.500
D : 110.500
C : 7.000
Dış Çap 0,50mm Farklı
(Outside Diameter
0,50 mm Different)

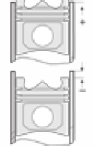
14-025812-00-D
B : 109.950
L : 218.500
D : 111.000
C : 7.000
Dış Çap 1,00mm Farklı
(Outside Diameter
0,50 mm Different)

14-025813-00-D
B : 110.450
L : 218.500
D : 111.500
C : 7.000
Dış Çap 1,50mm Farklı
(Outside Diameter
1,50 mm different)

14-025814-00-D
B : 110.950
L : 218.500
D : 112.000
C : 7.000
Dış Çap 2,00mm Farklı
(Outside Diameter
2,00 mm Different)



Silindir Kit
(Assembly Set)



Piston - Blok Montaj
Yüksekliği
(Piston - Block
Assembly Height)

+ 0,152 / + 0,380

