



MAN - Ø 128

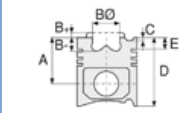
87-71544-STD A



Motor Özellikleri
(Engine Specifications)

İmalatçı (Manufacturer):
MAN
Çap (Diameter): Ø 128
FM Grup No: 5465

D2840 LE 203
10 Sil. Dizel 18270cc
673-741 PS(495-545 kw)
Marin, Endüstriyel
(Marine, Industrial)
- 1974



Piston Ölçüleri
(Piston Dimensions)

A : 81.300
B- : 25.600
BØ : 71.900
BX : 2.100
C1 : 1.300
D : 130.300
E : 18.700

Pim: 46 x 105



Piston Özellikleri
(Piston Features)

Segman Taşıyıcı
(Ring Carrier)
Yağ Püskürtme Oyuğu
(Oil Jet Cut-out)
Burçlu Piston
(Bushing Piston)
Gözarası Konik
(Conical Eye Gap)



Piston Parça No
(Piston Part No)

87-124500-32
87-71544-STD A



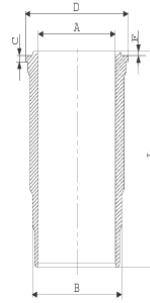
Segman Seti
(Ring Set)

06-124500-20-STD
4.000 CK KV4
3.000 GOE GOE
4.000 CR GOE
Goetze® LKZ-Ring® /
Yağ Segmanı Matkap
Delik (Oil Ring Drill Hole)

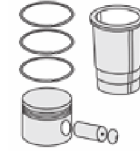


Silindir Gömleği
(Liner)

14-458210-00-WH
B : 144.500
L : 253.000
D : 153.800
C : 10.050
F : 1.000

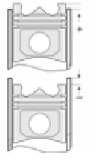


Dış Yüzeyi Fosfat Kaplı /
O-RING Bilgi
(Outer Surface
Phosphate Coated /
O-RING Information)
24-32448-70/O
2x 138*2,1 FPM
2x 144*4 FPM



Silindir Kit
(Assembly Set)

89-124500-32-STD
89-71544-STD A



Piston - Blok Montaj
Yüksekliği
(Piston - Block
Assembly Height)





MAN - Ø 128

87-71544-STD A



Motor Özellikleri
(Engine Specifications)



Piston Ölçüleri
(Piston Dimensions)



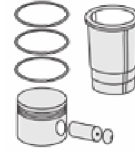
Piston Parça No
(Piston Part No)



Segman Seti
(Ring Set)



Silindir Gömleği
(Liner)



Silindir Kit
(Assembly Set)



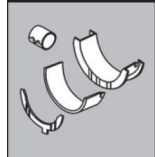
Piston - Blok Montaj
Yüksekliği
(Piston - Block
Assembly Height)

Ana Yatak
(Main Bearing)



H993/6 STD

Kol Yatak
(Connecting Rod Bearing)

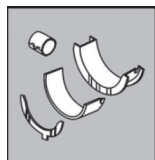


71-3638 STD

71-3289/2 STD

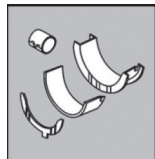
71-2965 STD

Eksantrik Yatak
(Camshaft Bearing)



N110/6L STD

Kol Burcu
(Small End Bushing)



55-2862 SEMI

Sil. Kapak. Conta
(Cylinder Head Gasket)



30-026235-10

