



MAN - Ø 128

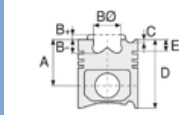
87-71581-STD A



Motor Özellikleri
(Engine Specifications)

İmalatçı (Manufacturer):
MAN
Çap (Diameter): Ø 128
FM Grup No: 5444

D2866 LF31 EURO II
6 Sil. Dizel 11967cc
301 Kw(409 PS) 16,75:1
19.414, 23.414 , 24.414,
26.414, 27.414, 30.414,
32.414, 33.314, 33.414,
35.414, 40.414, 41.414,
42.414, 50.414,
TGA18.412 FLS
1997....



Piston Ölçüleri
(Piston Dimensions)

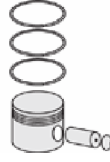
A : 89.750
B - : 22.500
BØ : 80.000
C1 : 1.900
D : 141.750
E : 18.600

Pim: 46 x 105



Piston Özellikleri
(Piston Features)

Segman Taşıyıcı
(Ring Carrier)
Yağ Püskürtme Oyuğu
(Oil Jet Cut-out)
Gözarası Konik
(Conical Eye Gap)



Piston Parça No
(Piston Part No)

87-104300-23
87-71581-STD1A
0,20 mm Kısa (Short)
87-104300-22
87-71581-STD A



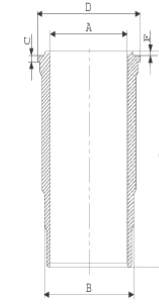
Segman Seti
(Ring Set)

06-104300-20-STD
4.000 CR KV1
3.000 STD
4.000 CR STD
Goetze® LKZ-Ring®

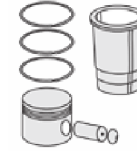


Silindir Gömleği
(Liner)

14-452920-00-WH
B : 144.500
L : 270.000
D : 153.800
C : 10.070
F : 1.000

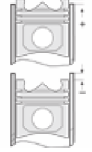


O-RING Bilgi
(O-RING Information)
24-32448-70/O
2x 138*2,1 FPM
2x 144*4 FPM



Silindir Kit
(Assembly Set)

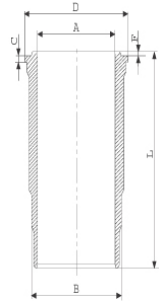
89-104300-22-STD
89-71581-STD A



Piston - Blok Montaj
Yüksekliği
(Piston - Block
Assembly Height)

+0,01 / +0,33

14-452930-00-WH
B : 144.500
L : 270.000
D : 153.800
C : 10.570
F : 1.000



Flanş 0,50mm Farklı
(Flange 0,50mm
Different)





MAN - Ø 128

87-71581-STD A



Motor Özellikleri
(Engine Specifications)



Piston Ölçüleri
(Piston Dimensions)



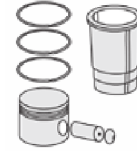
Piston Parça No
(Piston Part No)



Segman Seti
(Ring Set)



Silindir Gömleği
(Liner)



Silindir Kit
(Assembly Set)



Piston - Blok Montaj
Yüksekliği
(Piston - Block
Assembly Height)

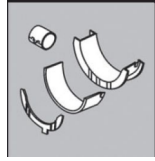
Ana Yatak
(Main Bearing)



H992/7 STD

H1239/7 STD

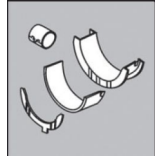
Kol Yatak
(Connecting Rod Bearing)



71-3637 STD

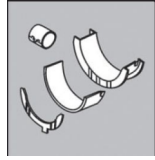
71-2965 STD

Eksantrik Yatak
(Camshaft Bearing)



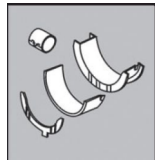
N109/7L STD

Ay Yatak
(Thrust Washer)



A159/4 STD

Kol Burcu
(Small End Bushing)



55-2862 SEMI

55-4747 SEMI

Sil. Kapak. Conta
(Cylinder Head Gasket)



BG850

