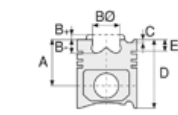


Motor Özellikleri
(Engine Specifications)

İmalatçı (Manufacturer):
Saab-Scania
Çap (Diameter): 115
FM Grup No: 7515

DSC 09 EURO2

6 Sil. Dizel 8724cc
310 PS 15,5:1
Turbocharged Intercooled
R94
1996....



Piston Ölçüleri
(Piston Dimensions)

A : 83.400
B- : 20.500
BØ : 71.500
BX : 3.000
BY : 2.000
C1 : 0.500
D : 130.950
E : 12.000

Pim: 50 x 91,8



Piston Özellikleri
(Piston Features)

Segman Taşıyıcı
(Ring Carrier)
Gözarası Konik
(Conical Eye Gap)



Piston Parça No
(Piston Part No)

87-109200-12
87-71899-STD A



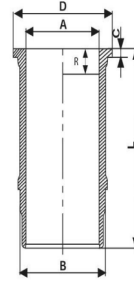
Segman Seti
(Ring Set)

06-109200-20-STD
3.160 CK KV1
2.385 STD
3.500 CR STD
Goetze® LKZ-Ring®

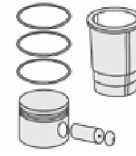


Silindir Gömleği
(Liner)

14-600020-00-WH
B : 132.910
L : 257.500
D : 140.740
C : 8.250
F : 0.750
R : 10.700

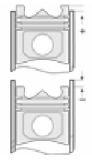


O-RING BİLGİ (O-Ring
Information)
24-35025-32/0
2x 129,50*4 FPM
1x 123*128*10,7 FPM



Silindir Kit
(Assembly Set)

89-109200-12-STD
89-71899-STD A



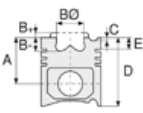
Piston - Blok Montaj
Yüksekliği
(Piston - Block
Assembly Height)

-0,35 / 0,50

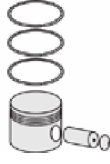




Motor Özellikleri
(Engine Specifications)



Piston Ölçüleri
(Piston Dimensions)



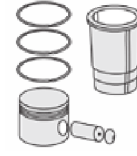
Piston Parça No
(Piston Part No)



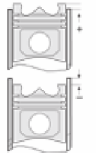
Segman Seti
(Ring Set)



Silindir Gömleği
(Liner)

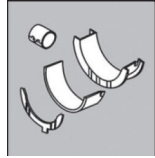


Silindir Kit
(Assembly Set)



Piston - Blok Montaj
Yüksekliği
(Piston - Block
Assembly Height)

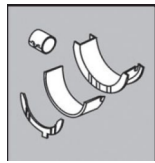
Ana Yatak
(Main Bearing)



H1073/7 STD

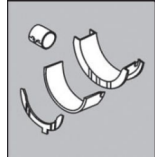
H1280/7 STD

Kol Yatak
(Connecting Rod Bearing)



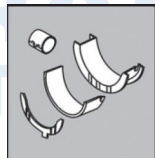
71-4214/6 STD

Eksantrik Yatak
(Camshaft Bearing)



N199/7 STD

Ay Yatak
(Thrust Washer)



A300/4 STD

