



Motor Özellikleri
(Engine Specifications)

İmalatçı (Manufacturer):
Saab-Scania
Çap (Diameter): 127
FM Grup No: 7509

DS 11.01 DSI 11.01

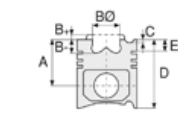
6 Sil. Dizel 11018cc
202 Kw (275 PS) 15:1
Turbo Tepe segmanı düz
L110S, LB110S, LBS110S,
LS110S
1973 - 1975

DS 11.01/2/14/15/18

DSC 11.01/2/4/11
6 Sil. Dizel 11018cc
206/245 Kw (280/333 PS)
15:1
Turbocharged Intercooled
Tepe segmanı düz
B116, G112M, K112, L111S,
LB111S, LBS111S, LBT111BB,
LBT111FB, LBT111S, LS111S,
LT111BB, LT111S, P112E,
P112H, P112M, P112MA,
R112, R112E, R112H, R112M,
R112MA, SBAT111, T112E,
T112H
1975 - 1978

DS 11.01/2/14/15/18

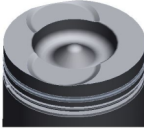
DSC 11.01/2/4/11
6 Sil. Dizel 11018cc
206/245 Kw (280/333 PS)
15:1
Turbocharged Intercooled
Tepe segmanı düz
B116, G112M, K112, L111S,
LB111S, LBS111S, LBT111BB,
LBT111FB, LBT111S, LS111S,
LT111BB, LT111S, P112E,
P112H, P112M, P112MA,
R112, R112E, R112H, R112M,
R112MA, SBAT111, T112E,
T112H
1975 - 1978



Piston Ölçüleri
(Piston Dimensions)

A : 98.760
B- : 27.060
BØ : 76.000
C1 : 2.900
D : 156.260
E : 23.600

Pim: 50 x 107,8



Piston Özellikleri
(Piston Features)

Segman Taşıyıcı
(Ring Carrier)
Yağ Püskürtme Oyuğu
(Oil Jet Cut-out)
Gözarası Konik
(Conical Eye Gap)



Piston Parça No
(Piston Part No)

87-990500-42
87-71904-STDC



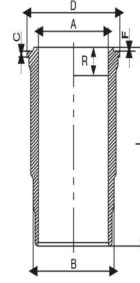
Segman Seti
(Ring Set)

06-990500-80-STD
2.385 CK KV1
2.385 CR STD
4.747 CR STD
Goetze® LKZ-Ring®

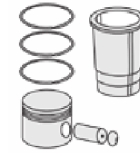


Silindir Gömleği
(Liner)

14-450850-00-WH
B : 140.000
L : 291.000
D : 153.800
C : 8.200
F : 0.800
R : 21.000

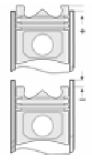


O-RING BİLGİ (O-Ring
Information)
24-35025-43/0
3x 139,5*4 FPM



Silindir Kit
(Assembly Set)

89-990500-42-STD
89-71904-STDC



Piston - Blok Montaj
Yüksekliği
(Piston - Block
Assembly Height)

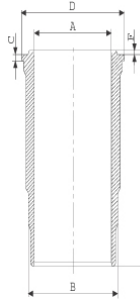
87-892500-22
87-73728-STDA

06-892500-00-STD
3.500 CK KV1
2.385 CR STD
4.747 CR STD
Goetze® LKZ-Ring®

14-450850-00 WH
O-RING BİLGİ (O-Ring
Information)
24-35025-43/0
3x 139,5*4 FPM

89-892500-22-STD
89-73728-STDA

14-451320-00-WH
B : 140.000
L : 291.000
D : 153.800
C : 8.200
F : 0.800



4 ADET O-RİNGLİ (With
4 O-Rings) /
24-35024-01/0
3x 139,5*4 FPM
1x 141*2,4 FPM





Motor Özellikleri
(Engine Specifications)



Piston Ölçüleri
(Piston Dimensions)



Piston Parça No
(Piston Part No)

87-962000-04
87-73728-STDB



Segman Seti
(Ring Set)

06-962000-20-STD

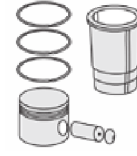
3.500  CR KV1
2.385  STD
4.747  CR STD

Goetze® LKZ-Ring®



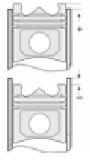
Silindir Gömleği
(Liner)

14-450850-00-WH
O-RING BİLGİ (O-Ring
Information)
24-35025-43/0
3x 139,5*4 FPM



Silindir Kit
(Assembly Set)

89-962000-04-STD
89-73728-STDB



Piston - Blok Montaj
Yüksekliği
(Piston - Block
Assembly Height)

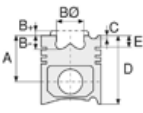
14-451320-00-WH
4 ADET O-RİNGLİ (With
4 O-Rings) /
24-35024-01/0
3x 139,5*4 FPM
1x 141*2,4 FPM

89-962000-63-STD
89-73728-STDC

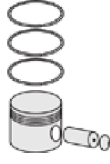




Motor Özellikleri
(Engine Specifications)



Piston Ölçüleri
(Piston Dimensions)



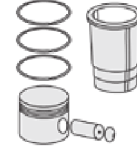
Piston Parça No
(Piston Part No)



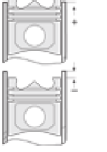
Segman Seti
(Ring Set)



Silindir Gömleği
(Liner)

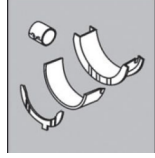


Silindir Kit
(Assembly Set)



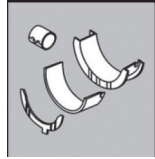
Piston - Blok Montaj
Yüksekliği
(Piston - Block
Assembly Height)

Ana Yatak
(Main Bearing)



H1059/7 STD

Kol Yatak
(Connecting Rod Bearing)



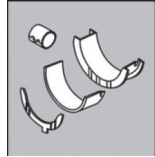
71-4237/6 STD

Eksantrik Yatak
(Camshaft Bearing)



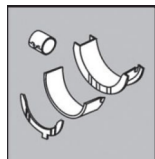
N197/4 SEMI

Ay Yatak
(Thrust Washer)



A216/4 STD

Kol Burcu
(Small End Bushing)



55-4240 SEMI

Sil. Kapak. Conta
(Cylinder Head Gasket)



DB130

DS560

