



VOLVO - Ø 104,77

87-72206-STD A



**Motor Özellikleri**  
(Engine Specifications)

İmalatçı (Manufacturer):  
VOLVO  
Çap (Diameter): Ø 104,77  
FM Grup No: 8874

**TD70F**

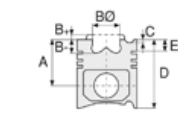
6 Sil. Dizel 6725cc 155  
Kw (210 PS) 14, 4:1 Turbo  
3500, 3700, 5350, 969,  
971, 980, B57, F7, F716,  
F724, LM1240, N7,  
VHK116, VHK118, VHK312  
1979 - 1985

**TD70FS**

6 Sil. Dizel 6725cc 179  
Kw (243 PS) 15.5:1 Turbo  
3500, 3700, 5350, 969,  
971, 980, B57, F7, F716,  
F724, LM1240, N7,  
VHK116, VHK118, VHK312  
1979 - 1985

**TD70G**

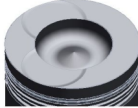
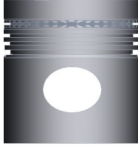
6 Sil. Dizel 6725cc 156  
Kw (212 PS) 15.5:1 Turbo  
3500, 3700, 5350, 969,  
971, 980, B57, F7, F716,  
F724, LM1240, N7,  
VHK116, VHK118, VHK312  
1979 - 1985



**Piston Ölçüleri**  
(Piston Dimensions)

A : 88.400  
B - : 26.200  
BØ : 60.000  
BX : 1.000  
C1 : 1.000  
D : 141.050  
E : 23.000

Pim : 45 x 85.77



**Piston Özellikleri**  
(Piston Features)

Segman Taşıyıcı  
(Ring Carrier)  
Soğutma Kanallı  
(Cooling Gallery)  
Gözarası Konik  
(Conical Eye Gap)



**Piston Parça No**  
(Piston Part No)

87-407000-12  
87-72206-STD A



**Segman Seti**  
(Ring Set)

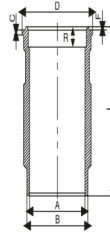
06-407000-20-STD  
2.385 CR KV1  
3.160 STD  
3.160 STD  
4.747 CR STD

Goetze® LKZ-Ring®

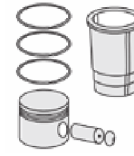


**Silindir Gömleği**  
(Liner)

14-573140-00-WH  
B : 117.000  
L : 257.000  
D : 127.000  
C : 11.600  
F : 0.740  
R : 18.000

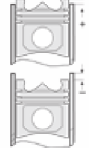


O-RİNG BİLGİ  
(O-ring Information)  
24-35030-03/0  
1 X 114\*1,6 FKM  
BLACK



**Silindir Kit**  
(Assembly Set)

89-407000-12-STD  
89-72206-STD A



**Piston - Blok Montaj**  
Yüksekliği  
(Piston - Block  
Assembly Height)



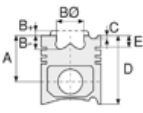


VOLVO - Ø 104,77

87-72206-STDA



**Motor Özellikleri**  
(Engine Specifications)



**Piston Ölçüleri**  
(Piston Dimensions)



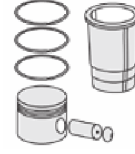
**Piston Parça No**  
(Piston Part No)



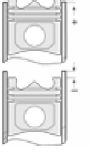
**Segman Seti**  
(Ring Set)



**Silindir Gömleği**  
(Liner)

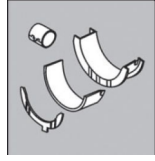


**Silindir Kit**  
(Assembly Set)



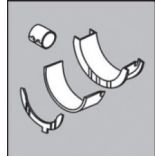
**Piston - Blok Montaj**  
**Yüksekliği**  
(Piston - Block  
Assembly Height)

**Ana Yatak**  
(Main Bearing)



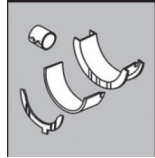
H841/7 STD

**Kol Yatak**  
(Connecting Rod Bearing)



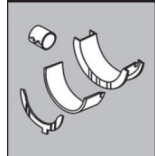
71-3623/6-STD

**Eksantrik Yatak**  
(Camshaft Bearing)



A126/4 STD

**Kol Burcu**  
(Small End Bushing)



55-3621 SEMI

**Silindir Kapak Conta**  
(Cylinder Head Gasket)



EE221

