



VOLVO - Ø 104,775

87-72217-STDA



**Motor Özellikleri**  
(Engine Specifications)

İmalatçı (Manufacturer):  
VOLVO  
Çap (Diameter): Ø 104,775  
FM Grup No: 8828

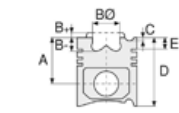
**TD 71 E**  
6 Sil. Dizel 6725cc 180  
Kw (245 PS) Turbo  
Intercooled 5350B, A 20,  
A 25, FL 7  
1985...

**TD 71 F**  
6 Sil. Dizel 6725cc 169  
kw (245 PS) 15:1 Turbo  
Intercooled 5350B, A 20,  
A 25, FL 7  
1985...

**TD 71 G**  
6 Sil. Dizel 6725cc 180  
Kw (245 PS) 15:1 Turbo  
Intercooled 5350B, A 20,  
A 25, B 57, FL 7  
1985...

**TD 71 FD**  
6 Sil. Dizel 6725cc 180  
Kw (245 PS) 15:1 Turbo  
Intercooled 5350B, A 20,  
A 25, B 57, FL 7  
1985...

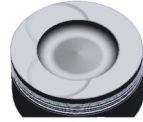
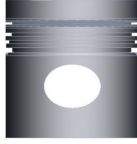
**TD 71 FSO/FSQ**  
6 Sil. Dizel 6725cc 177-180  
Kw (241-245 PS) 15:1  
Turbo Intercooled 5350B,  
A 20, A 25, B 57, FL 7  
1985...



**Piston Ölçüleri**  
(Piston Dimensions)

A : 88.400  
B - : 20.950  
BØ : 65.000  
BX : 1.000  
C1 : 1.000  
D : 141.050  
E : 23.000

Pim : 45 x 85,72



**Piston Özellikleri**  
(Piston Features)

Segman Taşıyıcı  
(Ring Carrier)  
Soğutma Kanallı  
(Cooling Gallery)  
Gözarası Konik  
(Conical Eye Gap)



**Piston Parça No**  
(Piston Part No)

87-501400-12  
87-72217-STDA



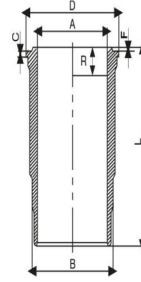
**Segman Seti**  
(Ring Set)

06-501400-80-STD  
2.390 CK KV1  
3.160 CR STD  
4.750 CR STD  
Goetze® LKZ-Ring®



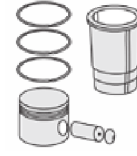
**Silindir Gömleği**  
(Liner)

14-459050-00-WH  
B : 116.964  
L : 259.450  
D : 127.000  
C : 9.660  
F : 3.590  
R : 21.320



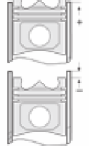
**O-RİNG BİLGİ**  
(O-ring Information)  
24-35030-50/O  
2x 115,7\*5,7 EPDM  
PEROX 1x 115,7\*5,7  
FPM LILA 1x 114\*1,6  
FPM

14-459050-00-WH  
**O-RİNG BİLGİ**  
(O-ring Information)  
24-35030-50/O  
2x 115,7\*5,7 EPDM  
PEROX 1x 115,7\*5,7  
FPM LILA 1x 114\*1,6  
FPM



**Silindir Kit**  
(Assembly Set)

89-501400-12-STD  
89-72217-STDA



**Piston - Blok Montaj**  
Yüksekliği  
(Piston - Block  
Assembly Height)

+0,20 / +0,70

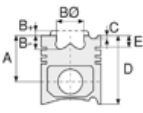


VOLVO - Ø 104,775

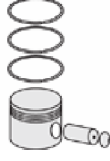
87-72217-STD A



**Motor Özellikleri**  
(Engine Specifications)



**Piston Ölçüleri**  
(Piston Dimensions)



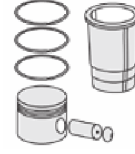
**Piston Parça No**  
(Piston Part No)



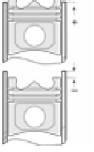
**Segman Seti**  
(Ring Set)



**Silindir Gömleği**  
(Liner)

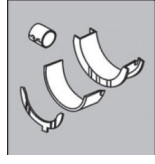


**Silindir Kit**  
(Assembly Set)



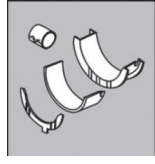
**Piston - Blok Montaj**  
Yüksekliği  
(Piston - Block  
Assembly Height)

**Ana Yatak**  
(Main Bearing)



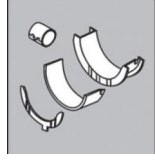
H841/7 STD

**Kol Yatak**  
(Connecting Rod Bearing)



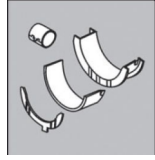
71-3623/6-STD

**Eksantrik Yatak**  
(Camshaft Bearing)



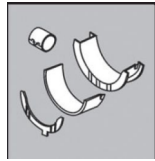
N157/7 STD

**Ay Yatak**  
(Thrust Washer)



A126/4 STD

**Kol Burcu**  
(Small End Bushing)



55-3621 SEMI

**Silindir Kapak Conta**  
(Cylinder Head Gasket)



DT840

TÜRKİYE