



VOLVO - Ø 120,64

87-72220-STD



Motor Özellikleri
(Engine Specifications)

İmalatçı (Manufacturer):
VOLVO
Çap (Diameter): Ø 120,64
FM Grup No: 8914

TD100G

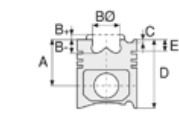
6 Sil. Dizel 9600cc 200
Kw (272Ps) 14, 3:1
TURBO F10, N10
1981 - 1986

TD100GG

6 Sil. Dizel 9600cc
TURBO
İNDUSTRIAL (Industrial)

TD100GA

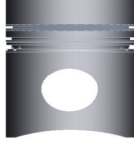
6 Sil. Dizel 9600cc 201
Kw (273Ps) 14, 3:1
TURBO F10, N10
1981 - 1986



Piston Ölçüleri
(Piston Dimensions)

A : 109.400
B - : 23.150
BØ : 76.000
BX : 4.000
C1 : 1.880
D : 166.400
E : 33.000

Pim : 52 x 105,66



Piston Özellikleri
(Piston Features)

Segman Taşıyıcı
(Ring Carrier)
Gözarası Düz
(Flat Eye Gap)



Piston Parça No
(Piston Part No)

87-827200-02
87-72220-STD



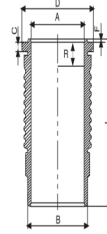
Segman Seti
(Ring Set)

06-827200-00-STD
2.385 KVI
3.160 STD
4.747 STD



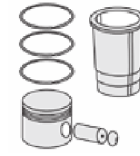
Silindir Gömleği
(Liner)

14-677620-00-WH
B : 134.000
L : 296.250
D : 147.000
C : 11.530
F : 3.400
R : 14.450



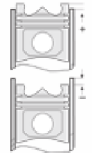
O-RING BİLGİ

(O Ring Information)
24-35030-80/O
1x 132,8*5,8 FPM LILA
1x 132,8*5,8 EPDM
1x 132,5*1,6 FPM



Silindir Kit
(Assembly Set)

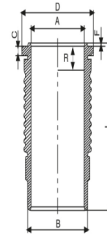
88-827200-12-STD
88-72220-STD



Piston - Blok Montaj
Yüksekliği
(Piston - Block
Assembly Height)

+0,15 / +0,65

14-459350-00-WH
B : 133.860
L : 296.250
D : 147.000
C : 11.530
F : 3.400
R : 14.450



O-RING BİLGİ

(O Ring Information)
24-35031-01/O
1x 132,8*5,8 FPM LILA
1x 132,8*5,8 EPDM
1x 132,5*2,4 FPM

88-827200-02-STD
88-72220-STD



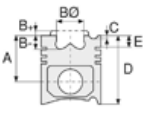


VOLVO - Ø 120,64

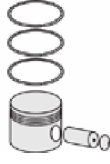
87-72220-STD



Motor Özellikleri
(Engine Specifications)



Piston Ölçüleri
(Piston Dimensions)



Piston Parça No
(Piston Part No)



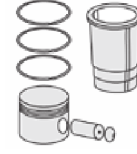
Segman Seti
(Ring Set)



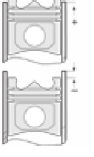
Silindir Gömleği
(Liner)

14-459350-00-WH
O-RİNG BİLGİ
(O Ring Information)
24-35031-01/0
1x 132,8*5,8 FPM LILA
1x 132,8*5,8 EPDM
1x 132,5*2,4 FPM

14-677620-00 WH
O-RİNG BİLGİ
(O Ring Information)
24-35030-80/0
1x 132,8*5,8 FPM LILA
1x 132,8*5,8 EPDM
1x 132,5*1,6 FPM



Silindir Kit
(Assembly Set)



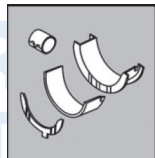
Piston - Blok Montaj
Yüksekliği
(Piston - Block
Assembly Height)

Alt Takım Conta
(Cylinder Gasket Crankcase)



Ee230

Ana Yatak
(Main Bearing)



H842/7 STD



FEDERAL-MOGUL
POWERTRAIN
TÜRKİYE

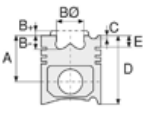


VOLVO - Ø 120,64

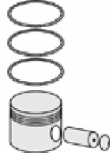
87-72220-STD



Motor Özellikleri
(Engine Specifications)



Piston Ölçüleri
(Piston Dimensions)



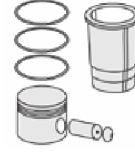
Piston Parça No
(Piston Part No)



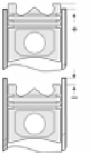
Segman Seti
(Ring Set)



Silindir Gömleği
(Liner)

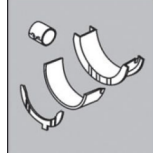


Silindir Kit
(Assembly Set)



Piston - Blok Montaj
Yüksekliği
(Piston - Block
Assembly Height)

Eksantrik Yatak
(Camshaft Bearing)



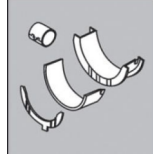
N157/7 SEMI

Full Takım Conta
(Full Set Gasket)



Gt930

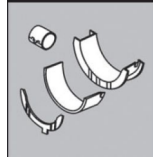
Kol Burcu
(Small End Bushing)



55-3509 SEMI

55-3610 SEMI

Kol Yatak
(Connecting Rod Bearing)



71-1227/6 STD

71-3601/6 STD

Silindir Kapak Conta
(Cylinder Head Gasket)



Bt930

Silindir Kapak Conta
(Cylinder Head Gasket)



Dt930

