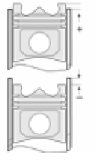
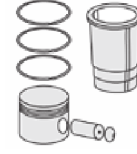
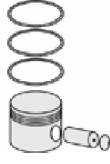
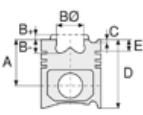
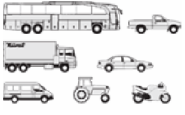




VOLVO - Ø 120,65

87-72223-STD



Motor Özellikleri
(Engine Specifications)

İmalatçı (Manufacturer):
VOLVO
Çap (Diameter): Ø 120,65
FM Grup No: 8818

TD 100 B
6 Sil. Dizel 9600cc
207-220 Kw(282-299 PS)
12,5:1

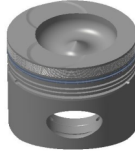
Turbo
F 10-20, F 10-38,
F 10-46, F 10-49, F 10-52,
F 10-56
1974 - 1981

TD 100 BG
6 Sil. Dizel 9600cc 14,3:1
Turbo
F 10, F 88, N 10
1976 - 1981

Piston Ölçüleri
(Piston Dimensions)

A : 109.450
B - : 27.650
BØ : 75.900
BX : 4.000
C1 : 2.800
D : 166.450
E : 26.450

Pim: 52 x 106



Piston Özellikleri
(Piston Features)

Segman Taşıyıcı
(Ring Carrier)
Gözarası Düz
(Flat Eye Gap)

Piston Parça No
(Piston Part No)

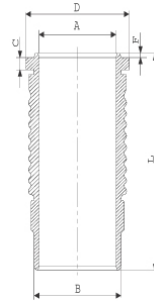
87-396300-22
87-72223-STD

Segman Seti
(Ring Set)

06-396300-10-STD
2.385 CRP KV1
3.160 P IKA
3.160 P STD
4.747 CRP STD

Silindir Gömleği
(Liner)

14-673200-00-WH
B : 134.000
L : 296.500
D : 147.000
C : 11.520
F : 3.480
R : 15.500



O-Ring Bilgi
(O-Ring Information)
24-35031-01/O
1x 132,8*5,8 FPM LILA
1x 132,8*5,8 EPDM
1x 132,5*2,4 FPM

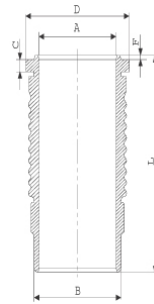
Silindir Kit
(Assembly Set)

89-396300-32-STD
89-72223-STDB

Piston - Blok Montaj
Yüksekliği
(Piston - Block
Assembly Height)

- 0,65 / + 0,15

14-673190-00-WH
B : 134.000
L : 294.000
D : 147.000
C : 11.740
F : 0.810
R : 13.000



14-673190-00-WH

14-673200-00-WH
O-Ring Bilgi
(O-Ring Information)
24-35031-01/O
1x 132,8*5,8 FPM LILA
1x 132,8*5,8 EPDM
1x 132,5*2,4 FPM

88-396300-22-STD
88-72223-STDA



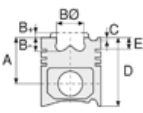


VOLVO - Ø 120,65

87-72223-STD



Motor Özellikleri
(Engine Specifications)



Piston Ölçüleri
(Piston Dimensions)



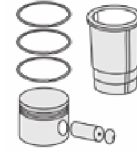
Piston Parça No
(Piston Part No)



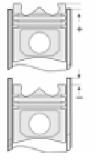
Segman Seti
(Ring Set)



Silindir Gömleği
(Liner)

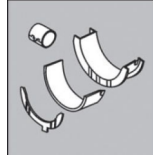


Silindir Kit
(Assembly Set)



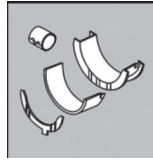
Piston - Blok Montaj
Yüksekliği
(Piston - Block
Assembly Height)

Ana Yatak
(Main Bearing)



H842/7 STD

Kol Yatak
(Connecting Rod Bearing)



71-1227/6 STD

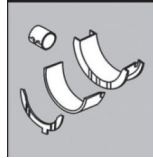
71-3601/6 STD

Ay Yatak
(Thrust Washer)



A122/4 STD

Kol Burcu
(Small End Bushing)



55-3509 SEMI

Silindir Kapak Conta
(Cylinder Head Gasket)



DE230

