



VOLVO - Ø 130,16

87-72236-STD



Motor Özellikleri
(Engine Specifications)

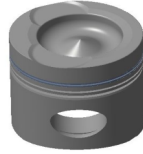
İmalatçı (Manufacturer):
VOLVO
Çap (Diameter): Ø 130,16
FM Grup No: 8895

TD120E
6 Sil. Dizel 11950cc
225-273Kw(306-371Ps)
13,3:1
Turbo
F12-38, F12-46, F12-49,
F12-52, F12-59
1977 - 1980

Piston Ölçüleri
(Piston Dimensions)

A : 114.200
B- : 27.620
BØ : 83.000
BX : 4.000
C1 : 2.640
D : 175.200
E : 35.000

Pim: 55 x 114



Piston Özellikleri
(Piston Features)

Segman Taşıyıcı
(Ring Carrier)
Gözarası Düz
(Flat Eye Gap)

Piston Parça No
(Piston Part No)

87-405600-32
87-72236-STD

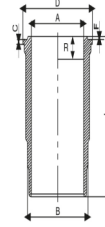
Segman Seti
(Ring Set)

06-405600-20-STD

2.381 CRP KV1
3.175 CRP STD
4.763 CRP STD

Silindir Gömleği
(Liner)

14-459030-00-WH
B : 143.909
L : 310.515
D : 157.582
C : 13.545
F : 0.686
R : 18.000



O-Ring Bilgi
(O-Ring Information)
24-35031-01/O
1x 132,8*5,8 FPM LILA
1x 132,8*5,8 EPDM
1x 132,5*2,4 FPM

Silindir Kit
(Assembly Set)

88-405600-32-STD
88-72236-STD

Piston - Blok Montaj
Yüksekliği
(Piston - Block
Assembly Height)

- 0,05 / + 0,45





VOLVO - Ø 130,16

87-72236-STD



Motor Özellikleri
(Engine Specifications)



Piston Ölçüleri
(Piston Dimensions)



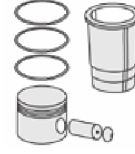
Piston Parça No
(Piston Part No)



Segman Seti
(Ring Set)



Silindir Gömleği
(Liner)

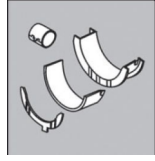


Silindir Kit
(Assembly Set)



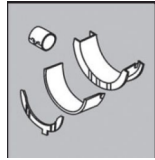
Piston - Blok Montaj
Yüksekliği
(Piston - Block
Assembly Height)

Ana Yatak
(Main Bearing)



H1053/7 STD

Kol Yatak
(Connecting Rod Bearing)



71-3613/6 STD

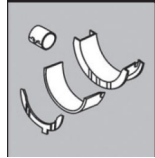
71-4236/6 STD

Ay Yatak
(Thrust Washer)



A131/4 STD

Kol Burcu
(Small End Bushing)



55-4509 SEMI

Silindir Kapak Conta
(Cylinder Head Gasket)



DE240

