



DAF - Ø 130

87-72480-STD

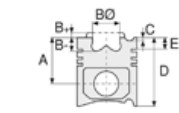


Motor Özellikleri
(Engine Specifications)

İmalatçı (Manufacturer):
DAF
Çap (Diameter): 130
FM Grup No: 2266

Paccar MX340S2
Euro 5

6 Sil. Dizel 12900cc
410/460 HP
SAFİR II, XF105, CF85,
SAFİR, SAFARI



Piston Ölçüleri
(Piston Dimensions)

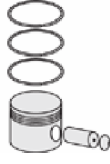
A : 82.000
B- : 17.500
BØ : 90.800
C1 : 0.900
C2 : 2.000
D : 126.000
E : 16.150

Pim: 55 x 106



Piston Özellikleri
(Piston Features)

Segman Taşıyıcı
(Ring Carrier)
Sert Anotlama
(Hard Anodizing)
Soğutma Kanallı
(Coolin Gallery)
Yağ Püskürtme Oyuğu
(Oil Jet Cut-out)
Burçlu Piston
(Bushing Piston)
Gözarası Konik
(Conical Eye Gap)



Piston Parça No
(Piston Part No)

87-841700-02
87-72480-STD



Segman Seti
(Ring Set)

06-841700-20-STD

3.000 CKS ST
2.500 F14
3.000 CR GOE

Goetze® LKZ-Ring® /
Yağ segmanı matkap
delikli (Oil Ring Drill
Perforated)



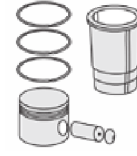
Silindir Gömleği
(Liner)

14-451230-20-WH
B : 146.000
L : 268.000
D : 157.600
C : 12.000
F : 0.950
R : 15.000

KURUM GİDERME
RİNGLİ (With Scraper
Rings)
/O-RING BİLGİ
(O-Ring Information) /
Euro 6 Malzemeli
(With Euro 6 Material)
24-35048-10/0
2x 146*157,4*5 EPDM
1x 146*157,4*5 FPM
1x139 EPDM

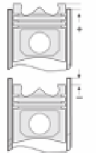
14-451230-20-WH
KURUM GİDERME
RİNGLİ (With Scraper
Rings)
/O-RING BİLGİ
(O-Ring Information) /
Euro 6 Malzemeli
(With Euro 6 Material)
24-35048-10/0
2x 146*157,4*5 EPDM
1x 146*157,4*5 FPM
1x139 EPDM

14-451231-20-WH
B : 146.000
L : 268.000
D : 157.600
C : 12.260
F : 0.950
R : 15.000



Silindir Kit
(Assembly Set)

89-841700-02-STD
89-72480-STD



Piston - Blok Montaj
Yüksekliği
(Piston - Block
Assembly Height)

0 / -0,20



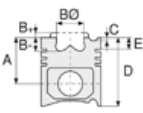


DAF - Ø 130

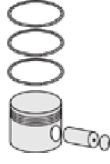
87-72480-STD



Motor Özellikleri
(Engine Specifications)



Piston Ölçüleri
(Piston Dimensions)



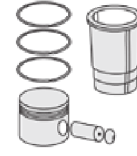
Piston Parça No
(Piston Part No)



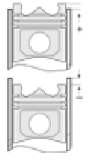
Segman Seti
(Ring Set)



Silindir Gömleği
(Liner)



Silindir Kit
(Assembly Set)



Piston - Blok Montaj
Yüksekliği
(Piston - Block
Assembly Height)

FLANŞ KALINLIĞI
(Flange Width)
0,25MM FARKLI
(0,25mm Different)
/ Euro 6 Malzemeli
(With Euro 6 Material)

14-451232-20-WH
B : 146.000
L : 268.000
D : 157.600
C : 12.500
F : 0.950
R : 15.000

FLANŞ KALINLIĞI
(Flange Width)
0,50MM FARKLI
(0,50mm Different)
/ Euro 6 Malzemeli
(With Euro 6 Material)
24-35048-10/0

14-451233-20-WH
B : 146.000
L : 268.000
D : 158.100
C : 12.510
F : 0.950
R : 15.000

FLANŞ KALINLIĞI
(Flange Width)
+BOĞAZ ALT ÇAPI
(Centering Diameter
Under Flange)
+ FLANŞ ÇAPI
(Flange Diameter)
+0,50 FARKLI
(0,50mm Different)
/ Euro 6 Malzemeli
(With Euro 6 Material)



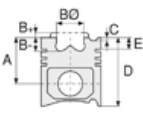


DAF - Ø 130

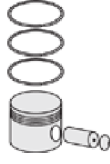
87-72480-STD



Motor Özellikleri
(Engine Specifications)



Piston Ölçüleri
(Piston Dimensions)



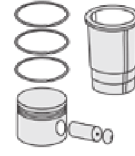
Piston Parça No
(Piston Part No)



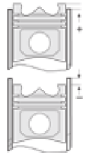
Segman Seti
(Ring Set)



Silindir Gömleği
(Liner)

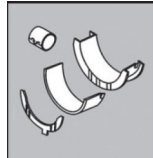


Silindir Kit
(Assembly Set)



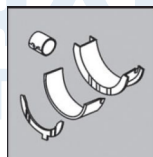
Piston - Blok Montaj
Yüksekliği
(Piston - Block
Assembly Height)

Ana Yatak
(Main Bearing)



H005/7P STD

Kol Yatak
(Connecting Rod Bearing)



71-3631/6P STD

