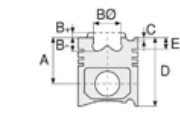




Motor Özellikleri
(Engine Specifications)

İmalatçı (Manufacturer):
MERCEDES BENZ LKW
Çap (Diameter): Ø 128
FM Grup No: 6023

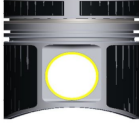
OM 444LA
12 Sil. Dizel 21920cc
735 KW (1000 PS)
MARİN, SABİT MOTOR
(Fixed Engine)
1963...



Piston Ölçüleri
(Piston Dimensions)

A : 81.350
B- : 29.000
BØ : 70.100
BX : 3.000
BY : 1.500
D : 126.350
E : 21.100

Pim : 46 x 105



Piston Özellikleri
(Piston Features)

Segman Taşıyıcı
(Ring Carrier)
Sert Anotlama
(Hard Anodizing)
Yağ Püskürtme Oyuğu
(Oil Jet Cut-Out)
Burçlu Piston
(Bushing Piston)
Gözarası Düz
(Flat Eye Gap)



Piston Parça No
(Piston Part No)

87-179300-42
87-72588-STD



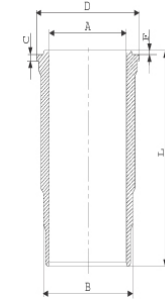
Segman Seti
(Ring Set)

06-179300-20-STD
3.000 PS ST
3.000 CR IKA
4.000 CR STD
Goetze® LKZ-Ring®

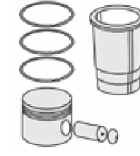


Silindir Gömleği
(Liner)

14-457080-00-WH
B : 144.500
L : 253.000
D : 153.800
C : 10.070
F : 1.000

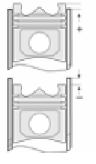


Dış Yüzeyi Krom Kaplı
(Outer Surface
Chrome Plated)
/ O-RING BİLGİ
(O-ring information)
24-35005-00/0
2x 140*1,9 FPM
2x 144*3,8 FPM



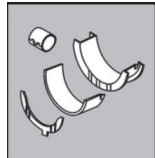
Silindir Kit
(Assembly Set)

89-179300-42-STD
89-72588-STD



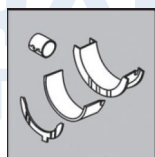
Piston - Blok Montaj
Yüksekliği
(Piston - Block
Assembly Height)

Ana Yatak
(Main Bearing)



H051/7 STD

Kol Yatak
(Connecting Rod Bearing)



71-2965 STD

71-3289/2 STD

71-3638 STD

