

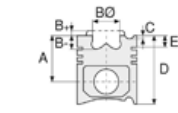


Motor Özellikleri
(Engine Specifications)

İmalatçı (Manufacturer):
MERCEDES BENZ LKW
Çap (Diameter): Ø 128
FM Grup No: 6024

OM422LA
8 Sil. Dizel 14618cc 269
KW (366 PS)
SABİT MOTOR
(Fixed Engine)
1992...

OM 444LA
12 Sil. Dizel 21930cc
362 KW (492 PS)
LOKOMOTİF (Locomotive)
1992...



Piston Ölçüleri
(Piston Dimensions)

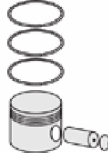
A : 81.310
B- : 27.500
BØ : 66.400
BX : 3.000
BY : 1.500
D : 126.270
E : 17.900

Pim : 46 x 105



Piston Özellikleri
(Piston Features)

Segman Taşıyıcı
(Ring Carrier)
Sert Anotlama
(Hard Anodizing)
Yağ Püskürtme Oyuğu
(Oil Jet Cut-Out)
Burçlu Piston
(Bushing Piston)
Gözarası Düz
(Flat Eye Gap)



Piston Parça No
(Piston Part No)

87-179300-22
87-72589-STD



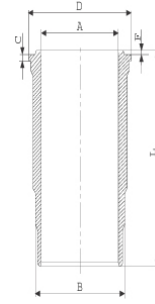
Segman Seti
(Ring Set)

06-179300-20-STD
3.000 PS ST
3.000 CR IKA
4.000 CR STD
Goetze® LKZ-Ring®

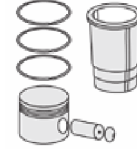


Silindir Gömleği
(Liner)

14-458440-00-WH
B : 144.500
L : 253.000
D : 153.800
C : 10.200
F : 1.100

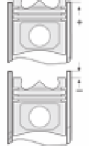


O-RING BİLGİ
(O-ring information)
24-26802-00/0
1x 140*1,9 FPM
2x 144*3,8 FPM
1 Adet (Piece) SHIM



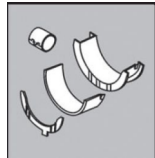
Silindir Kit
(Assembly Set)

89-179300-22-STD
89-72589-STD



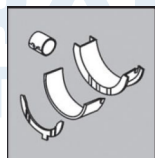
Piston - Blok Montaj
Yüksekliği
(Piston - Block
Assembly Height)

Ana Yatak
(Main Bearing)



H821/5 STD

Kol Yatak
(Connecting Rod Bearing)



71-3638 STD

71-3289/2 STD

71-2965 STD

