



MAN - Ø 128

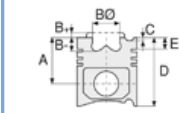
87-72951-STD



**Motor Özellikleri**  
(Engine Specifications)

İmalatçı (Manufacturer):  
MAN  
Çap (Diameter): Ø 128  
FM Grup No: 5491

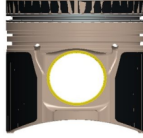
**D 2866 LE 201**  
6 Sil. Dizel 12817cc 483  
Marin (Marine)  
1969....



**Piston Ölçüleri**  
(Piston Dimensions)

A : 79.250  
B - : 23.790  
BØ : 85.100  
BX : 2.100  
C1 : 1.900  
D : 134.250  
E : 17.600

Pim: 50 x 103



**Piston Özellikleri**  
(Piston Features)

Segman Taşıyıcı  
(Ring Carrier)  
Soğutma Kanallı  
(Coolin Gallery)  
Yağ Püskürtme Oyuğu  
(Oil Jet Cut-out)  
Burçlu Piston  
(Bushing Piston)  
Gözarası Konik  
(Conical Eye Gap)



**Piston Parça No**  
(Piston Part No)

87-143800-82  
87-72951-STD  
  
87-143800-83  
87-72951-STD1  
0,20 mm Kısa (Short)  
  
87-143800-84  
87-72951-STD2  
0,60 mm Kısa (Short)



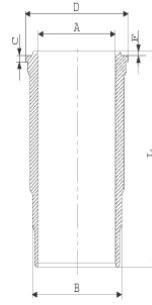
**Segman Seti**  
(Ring Set)

06-143800-20-STD  
  
4.000 CK Kv4  
3.000 CR GOE  
4.000 CR GOE  
Goetze® LKZ-Ring®

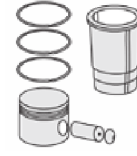


**Silindir Gömleği**  
(Liner)

14-450500-00-WH  
B : 144.500  
L : 270.000  
D : 153.800  
C : 10.070  
F : 1.000

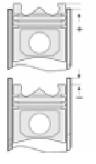


Dış Yüzeyi Fosfat Kaplı /  
O-RING Bilgi  
(Outer Surface  
Phosphate Coated /  
O-RING Information)  
24-32448-70/O  
2x 138\*2,1 FPM  
2x 144\*4 FPM



**Silindir Kit**  
(Assembly Set)

89-143800-82-STD  
89-72951-STD



**Piston - Blok Montaj**  
Yüksekliği  
(Piston - Block  
Assembly Height)



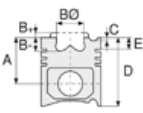


MAN - Ø 128

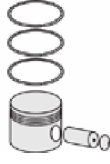
87-72951-STD



**Motor Özellikleri**  
(Engine Specifications)



**Piston Ölçüleri**  
(Piston Dimensions)



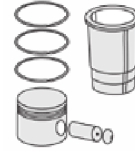
**Piston Parça No**  
(Piston Part No)



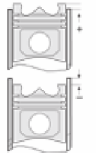
**Segman Seti**  
(Ring Set)



**Silindir Gömleği**  
(Liner)



**Silindir Kit**  
(Assembly Set)



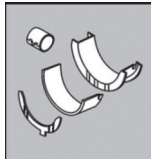
**Piston - Blok Montaj**  
**Yüksekliği**  
(Piston - Block  
Assembly Height)

**Ana Yatak**  
(Main Bearing)



H1239/7 STD

**Kol Yatak**  
(Connecting Rod Bearing)

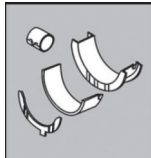


71-2965 STD

71-3561/6 STD

71-3637 STD

**Eksantrik Yatak**  
(Camshaft Bearing)



N109/7L STD

**Kol Burcu**  
(Small End Bushing)



55-2862 SEMI

