



VOLVO - Ø 98,42

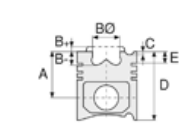
87-73640-STD



Motor Özellikleri
(Engine Specifications)

İmalatçı (Manufacturer):
VOLVO
Çap (Diameter): Ø 98,42
FM Grup No: 8894

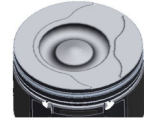
D6A HP/LP
6 Sil. Dizel 5480cc 19:1
Turbo FL612, FL614, FL615,
FL618
1995 - 2000



Piston Ölçüleri
(Piston Dimensions)

A : 79.700
B- : 19.400
BØ : 52.600
D : 124.900
E : 10.300

Pim : 40 x 77,3



Piston Özellikleri
(Piston Features)

Segman Taşıyıcı
(Ring Carrier)
Yağ Püskürtme Oyuğu
(Oil Jet Cut-Out)
Gözarası Konik
(Conical Eye Gap)



Piston Parça No
(Piston Part No)

87-142500-02
87-73640-STD

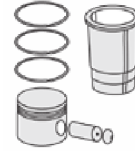


Segman Seti
(Ring Set)

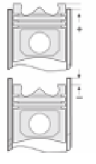
06-142500-80-STD
3.500 CK KV1
2.500 F14
3.500 CR STD



Silindir Gömleği
(Liner)



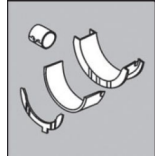
Silindir Kit
(Assembly Set)



Piston - Blok Montaj
Yüksekliği
(Piston - Block
Assembly Height)

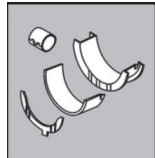
+0,05 / +0,55

Ana Yatak
(Main Bearing)



H969/7 STD

Kol Yatak
(Connecting Rod Bearing)



71-3446/6 STD

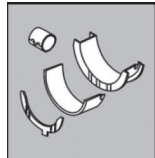
71-3695/6 STD

Ay Yatak
(Thrust Washer)



A121/4 STD

Kol Burcu
(Small End Bushing)



55-3524 SEMI

Silindir Kapak Conta
(Cylinder Head Gasket)



ET830

BT830

30-027608-00

